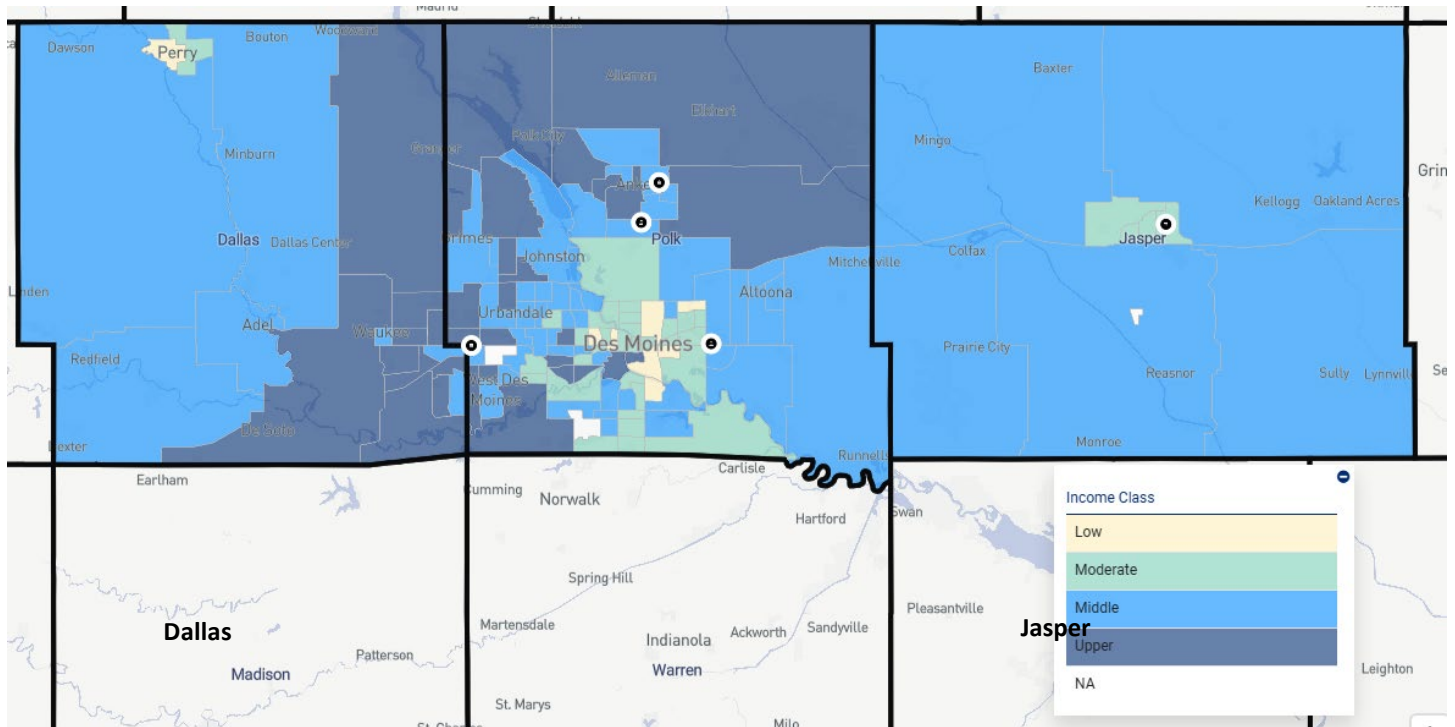


Des Moines Assessment Area



The Des Moines Iowa Assessment Area consists of Dallas, Polk, and Jasper counties and 5 banking centers listed below and indicated on the map with a black dot.

Banking Center	County	Census Tract Category
Newton (087)	Jasper	Moderate
Ankeny (093)	Polk	Middle
Ankeny North (535)	Polk	Middle
Clive (536)	Polk	Upper
Pleasant Hill (539)	Polk	Middle

State	MSA	County	Census Tract	Town	Minority Tract	Tract Income Catg	Percent Median
19	19780	49	501	Grant	<10%	>120%	152.2135
19	19780	49	502	Sugar Grove	<10%	80% - 120%	89.2682
19	19780	49	503	Spring Valley	20% - <50%	50% - 80%	67.9409
19	19780	49	504	Spring Valley	50% - <80%	<50%	49.9463
19	19780	49	505	Lincoln	<10%	80% - 120%	81.0784
19	19780	49	506	Union	<10%	80% - 120%	108.5673
State	MSA	County	Census Tract	Town	Minority Tract	Tract Income Catg	Percent Median
19	19780	49	507	Adel	<10%	80% - 120%	110.9171
19	19780	49	508.03	Walnut	10% - <20%	>120%	156.0968
19	19780	49	508.05	Walnut	10% - <20%	>120%	179.7962
19	19780	49	508.07	Walnut	20% - <50%	>120%	124.8073
19	19780	49	508.12	Boone	10% - <20%	>120%	156.5324
19	19780	49	508.13	Boone	20% - <50%	80% - 120%	117.1312

19	19780	49	508.14	Boone	20% - <50%	>120%	154.6293
19	19780	49	508.15	Boone	20% - <50%	>120%	140.8854
19	19780	49	508.16	Boone	20% - <50%	80% - 120%	108.785
19	19780	49	508.17	Boone	10% - <20%	>120%	148.3269
19	19780	49	508.18	Boone	20% - <50%	>120%	136.552
19	19780	49	509.01	Walnut	10% - <20%	80% - 120%	100.8655
19	19780	49	509.02	Van Meter	<10%	>120%	144.2594
19	19780	99	401	Mariposa	<10%	80% - 120%	88.0788
19	19780	99	402	Poweshiek	<10%	80% - 120%	106.4642
19	19780	99	403	Newton	10% - <20%	50% - 80%	65.2493
19	19780	99	404	Newton	10% - <20%	50% - 80%	61.585
19	19780	99	405	Newton	10% - <20%	50% - 80%	54.3556
19	19780	99	406	Newton	10% - <20%	50% - 80%	69.8027
19	19780	99	407	Des Moines	<10%	80% - 120%	84.936
19	19780	99	408	Fairview	<10%	80% - 120%	93.5357
19	19780	99	409	Lynn Grove	<10%	80% - 120%	93.0699
19	19780	99	9800	Palo Alto	20% - <50%	Unknown	0.00
19	19780	153	1.01	Lee	20% - <50%	<50%	45.0456
19	19780	153	1.02	Lee	20% - <50%	50% - 80%	66.9749
19	19780	153	1.03	Lee	20% - <50%	50% - 80%	75.4551
19	19780	153	2.01	Lee	20% - <50%	80% - 120%	81.1577
19	19780	153	2.02	Lee	20% - <50%	50% - 80%	73.7776
19	19780	153	3	Lee	20% - <50%	<50%	49.6046
19	19780	153	4	Des Moines	20% - <50%	50% - 80%	62.1914
19	19780	153	5	Des Moines	20% - <50%	50% - 80%	60.0136
19	19780	153	6	Des Moines	20% - <50%	50% - 80%	73.1979
19	19780	153	7.01	Des Moines	50% - <80%	50% - 80%	77.3816
19	19780	153	7.02	Webster	20% - <50%	80% - 120%	81.9428
19	19780	153	7.03	Des Moines	10% - <20%	80% - 120%	91.9073
19	19780	153	7.04	Webster	20% - <50%	80% - 120%	84.3619
19	19780	153	8.01	Webster	20% - <50%	80% - 120%	81.6122
19	19780	153	8.02	Des Moines	10% - <20%	80% - 120%	115.4258
19	19780	153	8.03	Des Moines	20% - <50%	50% - 80%	61.3873
19	19780	153	9.01	Des Moines	20% - <50%	80% - 120%	82.0567
19	19780	153	9.02	Des Moines	10% - <20%	>120%	121.1083
19	19780	153	10	Des Moines	20% - <50%	50% - 80%	77.4676
19	19780	153	11	Des Moines	50% - <80%	<50%	31.1633
19	19780	153	12	Des Moines	50% - <80%	50% - 80%	59.1078
State	MSA	County	Census Tract	Town	Minority Tract	Tract Income Catg	Percent Median
19	19780	153	15	Des Moines	20% - <50%	50% - 80%	74.6308
19	19780	153	17	Lee	80% - 100%	50% - 80%	53.9804
19	19780	153	18	Lee	20% - <50%	50% - 80%	67.3323
19	19780	153	19	Lee	20% - <50%	50% - 80%	72.9477
19	19780	153	21	Lee	20% - <50%	<50%	47.5362
19	19780	153	26	Des Moines	50% - <80%	50% - 80%	57.1388

19	19780	153	27	Des Moines	20% - <50%	80% - 120%	90.9435
19	19780	153	28	Des Moines	20% - <50%	80% - 120%	91.3254
19	19780	153	29	Des Moines	20% - <50%	50% - 80%	52.782
19	19780	153	30.01	Des Moines	10% - <20%	80% - 120%	107.2025
19	19780	153	30.02	Des Moines	<10%	>120%	194.5174
19	19780	153	31	Des Moines	10% - <20%	>120%	207.7799
19	19780	153	32	Des Moines	10% - <20%	>120%	168.2045
19	19780	153	39.01	Lee	50% - <80%	<50%	45.661
19	19780	153	39.02	Lee	50% - <80%	80% - 120%	86.4683
19	19780	153	40.01	Des Moines	20% - <50%	50% - 80%	75.9454
19	19780	153	40.04	Des Moines	10% - <20%	80% - 120%	109.2329
19	19780	153	41	Des Moines	20% - <50%	80% - 120%	90.2287
19	19780	153	42	Des Moines	20% - <50%	50% - 80%	71.1988
19	19780	153	43	Des Moines	20% - <50%	80% - 120%	82.547
19	19780	153	44	Lee	50% - <80%	50% - 80%	53.4923
19	19780	153	45.01	Bloomfield	20% - <50%	50% - 80%	68.6859
19	19780	153	45.02	Bloomfield	20% - <50%	80% - 120%	85.2464
19	19780	153	46.02	Bloomfield	20% - <50%	50% - 80%	67.3457
19	19780	153	46.03	Bloomfield	20% - <50%	80% - 120%	85.2732
19	19780	153	47.01	Bloomfield	20% - <50%	50% - 80%	67.0787
19	19780	153	47.02	Bloomfield	20% - <50%	50% - 80%	51.09
19	19780	153	48	Lee	50% - <80%	50% - 80%	53.4879
19	19780	153	49	Des Moines	50% - <80%	50% - 80%	52.4157
19	19780	153	50	Des Moines	50% - <80%	<50%	26.821
19	19780	153	51.01	Des Moines	20% - <50%	>120%	126.5451
19	19780	153	51.02	Lee	20% - <50%	>120%	136.9965
19	19780	153	52	Lee	50% - <80%	<50%	44.237
19	19780	153	53	Lee	20% - <50%	50% - 80%	74.6889
19	19780	153	101.01	Elkhart	<10%	>120%	138.0486
19	19780	153	101.02	Franklin	10% - <20%	>120%	123.199
19	19780	153	102.05	Crocker	10% - <20%	>120%	128.37
19	19780	153	102.07	Crocker	10% - <20%	>120%	122.6529
19	19780	153	102.08	Crocker	10% - <20%	80% - 120%	93.1872
19	19780	153	102.09	Crocker	10% - <20%	80% - 120%	109.5233
19	19780	153	102.11	Douglas	10% - <20%	80% - 120%	114.1828
19	19780	153	102.12	Crocker	10% - <20%	80% - 120%	106.8842
19	19780	153	102.13	Crocker	<10%	80% - 120%	119.7435
19	19780	153	102.14	Crocker	10% - <20%	80% - 120%	113.984
State	MSA	County	Census Tract	Town	Minority Tract	Tract Income Catg	Percent Median
19	19780	153	102.15	Crocker	<10%	>120%	168.3475
19	19780	153	102.16	Crocker	10% - <20%	80% - 120%	110.0873
19	19780	153	104.04	Webster	10% - <20%	80% - 120%	114.4497
19	19780	153	104.06	Webster	20% - <50%	80% - 120%	90.9758
19	19780	153	104.07	Webster	10% - <20%	>120%	154.3802
19	19780	153	104.08	Webster	20% - <50%	80% - 120%	103.0757

19	19780	153	104.09	Webster	20% - <50%	80% - 120%	106.3928
19	19780	153	104.10	Webster	20% - <50%	80% - 120%	85.2665
19	19780	153	104.11	Walnut	20% - <50%	80% - 120%	88.5099
19	19780	153	105	Saylor	10% - <20%	50% - 80%	73.4984
19	19780	153	106.01	Delaware	10% - <20%	80% - 120%	87.3271
19	19780	153	106.02	Delaware	20% - <50%	80% - 120%	103.9134
19	19780	153	107.02	Camp	<10%	80% - 120%	112.3947
19	19780	153	107.03	Clay	10% - <20%	80% - 120%	91.8247
19	19780	153	107.07	Clay	10% - <20%	80% - 120%	86.8681
19	19780	153	107.08	Clay	10% - <20%	80% - 120%	117.6014
19	19780	153	107.09	Clay	10% - <20%	80% - 120%	95.5828
19	19780	153	108.03	Four Mile	10% - <20%	80% - 120%	82.3672
19	19780	153	108.04	Four Mile	10% - <20%	80% - 120%	118.9506
19	19780	153	108.05	Bloomfield	20% - <50%	80% - 120%	108.2166
19	19780	153	108.06	Allen	20% - <50%	50% - 80%	72.5278
19	19780	153	110.01	Walnut	20% - <50%	50% - 80%	69.8697
19	19780	153	110.21	Walnut	10% - <20%	80% - 120%	113.3273
19	19780	153	110.25	Walnut	10% - <20%	>120%	131.5653
19	19780	153	110.26	Walnut	10% - <20%	>120%	165.093
19	19780	153	110.27	Walnut	20% - <50%	80% - 120%	114.9076
19	19780	153	110.28	Bloomfield	20% - <50%	>120%	135.9221
19	19780	153	111.11	Walnut	20% - <50%	50% - 80%	62.8794
19	19780	153	111.12	Walnut	20% - <50%	80% - 120%	114.4765
19	19780	153	111.13	Walnut	20% - <50%	80% - 120%	117.4082
19	19780	153	111.14	Walnut	20% - <50%	Unknown	0.00
19	19780	153	112.01	Walnut	20% - <50%	80% - 120%	104.8013
19	19780	153	112.03	Walnut	10% - <20%	>120%	168.3642
19	19780	153	112.05	Walnut	50% - <80%	80% - 120%	92.2491
19	19780	153	112.06	Walnut	10% - <20%	>120%	126.343
19	19780	153	113.01	Jefferson	<10%	>120%	142.3239
19	19780	153	113.02	Jefferson	10% - <20%	80% - 120%	113.0983
19	19780	153	113.03	Webster	10% - <20%	80% - 120%	92.7326
19	19780	153	113.04	Webster	10% - <20%	>120%	181.4871
19	19780	153	113.05	Webster	20% - <50%	80% - 120%	93.9254
19	19780	153	114.05	Jefferson	10% - <20%	>120%	214.1202
19	19780	153	114.06	Saylorville Reservoir	10% - <20%	80% - 120%	88.7891
19	19780	153	115	Madison	<10%	>120%	147.1341
State	MSA	County	Census Tract	Town	Minority Tract	Tract Income Catg	Percent Median
19	19780	153	116	Bloomfield	Unknown	Unknown	0.00
19	19780	153	117.02	Webster	10% - <20%	80% - 120%	106.3537
19	19780	153	117.03	Webster	10% - <20%	>120%	164.9824
19	19780	153	117.04	Webster	10% - <20%	>120%	162.1099