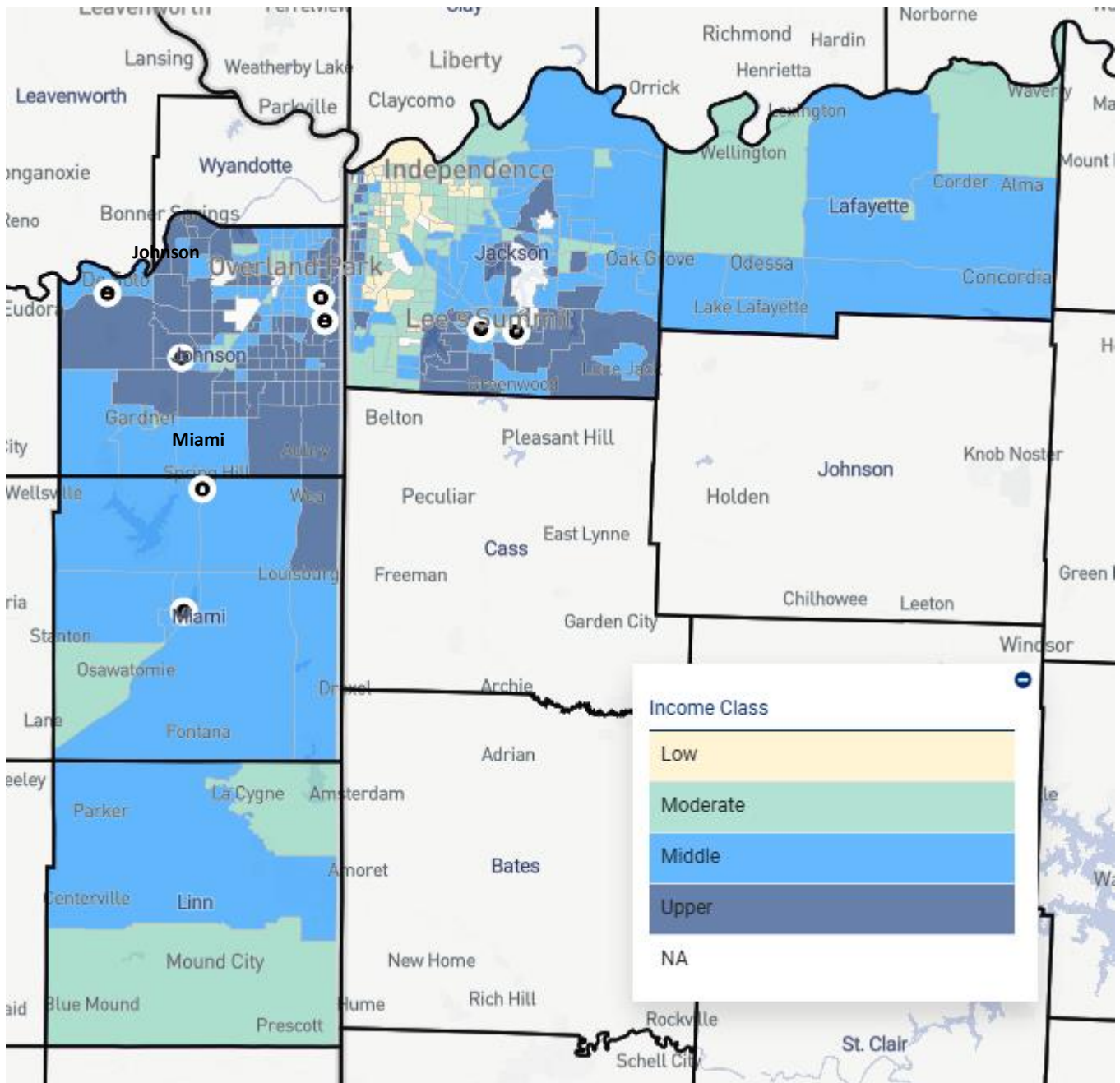


Kansas City Multi-State Assessment Area



The Kansas City Multi-State Assessment Area consists of Johnson, Miami, and Linn counties in Kansas; and Jackson and Lafayette counties in Missouri. There are 8 banking centers in the assessment area listed below and indicated on the map with a black dot.

Banking Center	County	Census Tract Category
Overland Park (019)	Johnson, KS	Upper
Lee's Summit (046)	Jackson, MO	Middle
Todd George (056)	Jackson, MO	Middle
Paola East (062)	Miami, KS	Middle
Spring Hill (063)	Miami, KS	Middle
DeSoto (070)	Johnson, KS	Middle
Olathe (072)	Johnson, KS	Upper
Prairie Village (074)	Johnson, KS	Upper

State	County	Census Tract	MSA/MD	Place	Tract MFI %	LMI	Minority %
20	091	0500.00	28140	FAIRWAY CITY, KS	147.89	UPPER INCOME	16.15
20	091	0501.00	28140	FAIRWAY CITY, KS	93.76	MIDDLE INCOME	26.09
20	091	0502.00	28140	FAIRWAY CITY, KS	107.14	MIDDLE INCOME	21.04
20	091	0503.01	28140	MISSION CITY, KS	85.37	MIDDLE INCOME	34.24
20	091	0503.02	28140	MISSION CITY, KS	80.54	MIDDLE INCOME	20.23
20	091	0504.00	28140	MERRIAM CITY, KS	105.64	MIDDLE INCOME	33.93
20	091	0505.00	28140	MERRIAM CITY, KS	87.72	MIDDLE INCOME	23.02
20	091	0506.00	28140	MISSION CITY, KS	146.96	UPPER INCOME	16.34
20	091	0507.00	28140	FAIRWAY CITY, KS	163.49	UPPER INCOME	11.57
20	091	0508.00	28140	FAIRWAY CITY, KS	288.81	UPPER INCOME	9.97
20	091	0509.00	28140	MISSION HILLS CITY, KS	156.95	UPPER INCOME	11.63
20	091	0510.00	28140	PRAIRIE VILLAGE CITY, KS	148.57	UPPER INCOME	10.95
20	091	0511.00	28140	OVERLAND PARK CITY, KS	105.34	MIDDLE INCOME	23.18
20	091	0512.00	28140	OVERLAND PARK CITY, KS	99.8	MIDDLE INCOME	26.25
20	091	0513.00	28140	OVERLAND PARK CITY, KS	86.95	MIDDLE INCOME	19.77
20	091	0514.00	28140	PRAIRIE VILLAGE CITY, KS	146.13	UPPER INCOME	10.32
20	091	0515.00	28140	PRAIRIE VILLAGE CITY, KS	154.98	UPPER INCOME	14.24
20	091	0516.00	28140	LEAWOOD CITY, KS	169.64	UPPER INCOME	9.59
20	091	0517.00	28140	LEAWOOD CITY, KS	204.87	UPPER INCOME	9.55
20	091	0518.01	28140	PRAIRIE VILLAGE CITY, KS	182.43	UPPER INCOME	11.13
20	091	0518.03	28140	OVERLAND PARK CITY, KS	91.82	MIDDLE INCOME	27.48
20	091	0518.04	28140	OVERLAND PARK CITY, KS	95.99	MIDDLE INCOME	23.78
20	091	0518.05	28140	OVERLAND PARK CITY, KS	113.42	MIDDLE INCOME	15.47
20	091	0518.06	28140	OVERLAND PARK CITY, KS	147.63	UPPER INCOME	16.35
20	091	0518.07	28140	OVERLAND PARK CITY, KS	95.82	MIDDLE INCOME	15.54
20	091	0518.08	28140	OVERLAND PARK CITY, KS	47.56	LOW INCOME	39.59
20	091	0519.02	28140	OVERLAND PARK CITY, KS	101.08	MIDDLE INCOME	26.81
20	091	0519.04	28140	OVERLAND PARK CITY, KS	118.54	MIDDLE INCOME	22.24
20	091	0519.07	28140	OVERLAND PARK CITY, KS	91.49	MIDDLE INCOME	49.15
20	091	0519.08	28140	OVERLAND PARK CITY, KS	96.75	MIDDLE INCOME	31.02
20	091	0519.09	28140	OVERLAND PARK CITY, KS	104.9	MIDDLE INCOME	23.99
20	091	0519.10	28140	OVERLAND PARK CITY, KS	91.33	MIDDLE INCOME	41.22
20	091	0519.11	28140	OVERLAND PARK CITY, KS	65.41	MODERATE INCOME	44.19
20	091	0519.12	28140	OVERLAND PARK CITY, KS	96.75	MIDDLE INCOME	31.49
20	091	0520.01	28140	MERRIAM CITY, KS	88.08	MIDDLE INCOME	23.53
20	091	0520.04	28140	MERRIAM CITY, KS	72.78	MODERATE INCOME	27.04
20	091	0520.05	28140	SHAWNEE CITY, KS	66.57	MODERATE INCOME	32.11
20	091	0520.06	28140	SHAWNEE CITY, KS	75.02	MODERATE INCOME	36.94
20	091	0521.01	28140	MERRIAM CITY, KS	103.38	MIDDLE INCOME	26.33
20	091	0521.02	28140	SHAWNEE CITY, KS	88.3	MIDDLE INCOME	27.16
20	091	0522.01	28140	MERRIAM CITY, KS	88.72	MIDDLE INCOME	34.69
20	091	0522.02	28140	SHAWNEE CITY, KS	97.09	MIDDLE INCOME	19.34

20	091	0523.04	28140	SHAWNEE CITY, KS	113.42	MIDDLE INCOME	24.88
20	091	0523.05	28140	SHAWNEE CITY, KS	119.71	MIDDLE INCOME	17.5
20	091	0523.06	28140	LAKE QUIVIRA CITY, KS	158.12	UPPER INCOME	14.76
20	091	0523.07	28140	SHAWNEE CITY, KS	99.83	MIDDLE INCOME	26.92
20	091	0523.08	28140	SHAWNEE CITY, KS	70.96	MODERATE INCOME	37.49
20	091	0524.10	28140	LENEXA CITY, KS	136.74	UPPER INCOME	21.33
20	091	0524.11	28140	LENEXA CITY, KS	161.6	UPPER INCOME	18.89
20	091	0524.14	28140	LENEXA CITY, KS	142.35	UPPER INCOME	14.63
20	091	0524.15	28140	LENEXA CITY, KS	119.9	MIDDLE INCOME	25.95
20	091	0524.16	28140	LENEXA CITY, KS	103.15	MIDDLE INCOME	17.9
20	091	0524.17	28140	LENEXA CITY, KS	80	MIDDLE INCOME	40.84
20	091	0524.18	28140	LENEXA CITY, KS	44.55	LOW INCOME	57.62
20	091	0524.19	28140	LENEXA CITY, KS	115.68	MIDDLE INCOME	32.27
20	091	0524.21	28140	LENEXA CITY, KS	123.36	UPPER INCOME	18.67
20	091	0524.22	28140	LENEXA CITY, KS	114.38	MIDDLE INCOME	23.35
20	091	0524.23	28140	LENEXA CITY, KS	57.95	MODERATE INCOME	53.71
20	091	0525.02	28140	SHAWNEE CITY, KS	175.63	UPPER INCOME	14.2
20	091	0525.05	28140	LENEXA CITY, KS	177.34	UPPER INCOME	24.34
20	091	0525.06	28140	LENEXA CITY, KS	147.42	UPPER INCOME	16.25
20	091	0525.07	28140	LENEXA CITY, KS	119.37	MIDDLE INCOME	28.47
20	091	0526.04	28140	SHAWNEE CITY, KS	168.55	UPPER INCOME	13.89
20	091	0526.06	28140	SHAWNEE CITY, KS	119.59	MIDDLE INCOME	18.07
20	091	0526.07	28140	SHAWNEE CITY, KS	149.86	UPPER INCOME	15.62
20	091	0526.08	28140	LENEXA CITY, KS	201.39	UPPER INCOME	15.43
20	091	0526.09	28140	LENEXA CITY, KS	168.6	UPPER INCOME	17.24
20	091	0526.10	28140	BONNER SPRINGS CITY, KS	161.89	UPPER INCOME	21.04
20	091	0526.11	28140	SHAWNEE CITY, KS	116.43	MIDDLE INCOME	16.41
20	091	0526.12	28140	SHAWNEE CITY, KS	159.64	UPPER INCOME	16.89
20	091	0526.13	28140	SHAWNEE CITY, KS	184.96	UPPER INCOME	18.17
20	091	0527.01	28140	DE SOTO CITY, KS	104.26	MIDDLE INCOME	22.79
20	091	0527.02	28140	DE SOTO CITY, KS	131.52	UPPER INCOME	19.34
20	091	0528.03	28140	OLATHE CITY, KS	84.21	MIDDLE INCOME	48.61
20	091	0528.04	28140	OLATHE CITY, KS	220.24	UPPER INCOME	12.3
20	091	0528.05	28140	OLATHE CITY, KS	131.54	UPPER INCOME	21.37
20	091	0528.06	28140	OLATHE CITY, KS	129.19	UPPER INCOME	21.79
20	091	0528.07	28140	OLATHE CITY, KS	153.27	UPPER INCOME	19.21
20	091	0529.04	28140	OLATHE CITY, KS	106.16	MIDDLE INCOME	26.83
20	091	0529.05	28140	OLATHE CITY, KS	60.41	MODERATE INCOME	58.25
20	091	0529.06	28140	OLATHE CITY, KS	78.5	MODERATE INCOME	37.28
20	091	0529.07	28140	OLATHE CITY, KS	92.27	MIDDLE INCOME	40.95
20	091	0529.08	28140	OLATHE CITY, KS	104.96	MIDDLE INCOME	35.77
20	091	0529.10	28140	LENEXA CITY, KS	165.6	UPPER INCOME	19.52
20	091	0530.04	28140	OVERLAND PARK CITY, KS	99.04	MIDDLE INCOME	21.17
20	091	0530.05	28140	LENEXA CITY, KS	126.11	UPPER INCOME	28.93

20	091	0530.06	28140	OLATHE CITY, KS	147.39	UPPER INCOME	20.59
20	091	0530.07	28140	OLATHE CITY, KS	117.37	MIDDLE INCOME	25.47
20	091	0530.08	28140	OVERLAND PARK CITY, KS	135.4	UPPER INCOME	26.79
20	091	0530.09	28140	OVERLAND PARK CITY, KS	182.77	UPPER INCOME	19.65
20	091	0530.10	28140	OVERLAND PARK CITY, KS	179.32	UPPER INCOME	20.13
20	091	0530.11	28140	OLATHE CITY, KS	164.21	UPPER INCOME	23.73
20	091	0530.12	28140	OVERLAND PARK CITY, KS	142.29	UPPER INCOME	25.42
20	091	0530.13	28140	OVERLAND PARK CITY, KS	121.91	UPPER INCOME	32.88
20	091	0531.01	28140	OVERLAND PARK CITY, KS	122.74	UPPER INCOME	23.8
20	091	0531.02	28140	OVERLAND PARK CITY, KS	127	UPPER INCOME	30.06
20	091	0531.05	28140	OVERLAND PARK CITY, KS	93.68	MIDDLE INCOME	38.69
20	091	0531.08	28140	OVERLAND PARK CITY, KS	139.79	UPPER INCOME	25.05
20	091	0531.09	28140	OVERLAND PARK CITY, KS	133.26	UPPER INCOME	45.86
20	091	0531.10	28140	OVERLAND PARK CITY, KS	165.5	UPPER INCOME	26.01
20	091	0532.01	28140	LEAWOOD CITY, KS	168.26	UPPER INCOME	20.3
20	091	0532.02	28140	LEAWOOD CITY, KS	173.28	UPPER INCOME	17.43
20	091	0532.03	28140	LEAWOOD CITY, KS	189.92	UPPER INCOME	22.18
20	091	0533.01	28140	LEAWOOD CITY, KS	235.23	UPPER INCOME	13.98
20	091	0533.02	28140	LEAWOOD CITY, KS	252.39	UPPER INCOME	11.47
20	091	0534.03	28140	OLATHE CITY, KS	133.37	UPPER INCOME	28.46
20	091	0534.09	28140	LEAWOOD CITY, KS	204.47	UPPER INCOME	21.08
20	091	0534.11	28140	OVERLAND PARK CITY, KS	133.05	UPPER INCOME	21.09
20	091	0534.13	28140	OVERLAND PARK CITY, KS	147.24	UPPER INCOME	30.97
20	091	0534.14	28140	OVERLAND PARK CITY, KS	119.47	MIDDLE INCOME	48.18
20	091	0534.15	28140	OVERLAND PARK CITY, KS	134.29	UPPER INCOME	32.22
20	091	0534.17	28140	OVERLAND PARK CITY, KS	129.12	UPPER INCOME	32.7
20	091	0534.18	28140	OVERLAND PARK CITY, KS	143.81	UPPER INCOME	35
20	091	0534.19	28140	OVERLAND PARK CITY, KS	162.41	UPPER INCOME	20.71
20	091	0534.21	28140	OVERLAND PARK CITY, KS	191.41	UPPER INCOME	29
20	091	0534.22	28140	OVERLAND PARK CITY, KS	199.85	UPPER INCOME	23.99
20	091	0534.23	28140	OVERLAND PARK CITY, KS	229.23	UPPER INCOME	28.15
20	091	0534.25	28140	OLATHE CITY, KS	139.83	UPPER INCOME	22.86
20	091	0534.26	28140	OLATHE CITY, KS	157.4	UPPER INCOME	24.75
20	091	0534.27	28140	OVERLAND PARK CITY, KS	271.05	UPPER INCOME	18.83
20	091	0534.28	28140	OVERLAND PARK CITY, KS	236.22	UPPER INCOME	27.7
20	091	0534.29	28140	LEAWOOD CITY, KS	238.87	UPPER INCOME	23.68
20	091	0534.30	28140	LEAWOOD CITY, KS	212.93	UPPER INCOME	20.63
20	091	0534.31	28140	LEAWOOD CITY, KS	191.49	UPPER INCOME	19.45
20	091	0535.02	28140	OLATHE CITY, KS	50.39	MODERATE INCOME	47.15
20	091	0535.06	28140	OLATHE CITY, KS	145.48	UPPER INCOME	23.77
20	091	0535.07	28140	OLATHE CITY, KS	112.45	MIDDLE INCOME	20.4
20	091	0535.08	28140	OLATHE CITY, KS	126.91	UPPER INCOME	25.21
20	091	0535.09	28140	OLATHE CITY, KS	125.77	UPPER INCOME	25.53
20	091	0535.10	28140	OLATHE CITY, KS	131.4	UPPER INCOME	23.77

20	091	0535.55	28140	OLATHE CITY, KS	57.5	MODERATE INCOME	41.76
20	091	0535.56	28140	OLATHE CITY, KS	67.14	MODERATE INCOME	47.71
20	091	0535.57	28140	OLATHE CITY, KS	75.95	MODERATE INCOME	46.69
20	091	0535.58	28140	OLATHE CITY, KS	129.37	UPPER INCOME	25.87
20	091	0535.59	28140	OLATHE CITY, KS	147.52	UPPER INCOME	23.38
20	091	0535.60	28140	OLATHE CITY, KS	187.16	UPPER INCOME	12.98
20	091	0536.01	28140	OLATHE CITY, KS	93.86	MIDDLE INCOME	49
20	091	0536.03	28140	OLATHE CITY, KS	141.33	UPPER INCOME	22.04
20	091	0536.04	28140	OLATHE CITY, KS	119.81	MIDDLE INCOME	39.59
20	091	0537.01	28140	EDGERTON CITY, KS	100.5	MIDDLE INCOME	13.45
20	091	0537.03	28140	GARDNER CITY, KS	103.73	MIDDLE INCOME	21.74
20	091	0537.05	28140	GARDNER CITY, KS	72.33	MODERATE INCOME	31.64
20	091	0537.07	28140	GARDNER CITY, KS	96.13	MIDDLE INCOME	26.87
20	091	0537.09	28140	EDGERTON CITY, KS	112.41	MIDDLE INCOME	20.37
20	091	0537.11	28140	GARDNER CITY, KS	146.13	UPPER INCOME	18.69
20	091	0537.12	28140	EDGERTON CITY, KS	113.57	MIDDLE INCOME	19.82
20	091	0538.01	28140	GARDNER CITY, KS	110.68	MIDDLE INCOME	14.07
20	091	0538.03	28140	OVERLAND PARK CITY, KS	166.18	UPPER INCOME	10.17
20	091	0538.04	28140	OVERLAND PARK CITY, KS	200.06	UPPER INCOME	16.87
20	091	9800.01	28140	LENEXA CITY, KS	0	NA	50
20	091	9800.03	28140	LENEXA CITY, KS	0	NA	100
20	091	9800.04	28140	LENEXA CITY, KS	0	NA	100
20	091	9800.05	28140	LENEXA CITY, KS	0	NA	100
20	091	9801.00	28140	LENEXA CITY, KS	0	NA	0
20	107	9551.01	28140	CENTERVILLE CDP, KS	83.08	MIDDLE INCOME	7.7
20	107	9551.02	28140	LA CYGNE CITY, KS	73.45	MODERATE INCOME	9.4
20	107	9552.00	28140	BLUE MOUND CITY, KS	73.21	MODERATE INCOME	8.33
20	121	1001.00	28140	HILLSDALE CDP, KS	109.33	MIDDLE INCOME	8.84
20	121	1002.00	28140	BUCYRUS CDP, KS	119.85	MIDDLE INCOME	10.9
20	121	1003.00	28140	LOUISBURG CITY, KS	129.72	UPPER INCOME	10.35
20	121	1004.00	28140	LOUISBURG CITY, KS	99.86	MIDDLE INCOME	9.97
20	121	1005.00	28140	FONTANA CITY, KS	96.2	MIDDLE INCOME	8.74
20	121	1006.01	28140	PAOLA CITY, KS	96.89	MIDDLE INCOME	12.86
20	121	1006.02	28140	OSAWATOMIE CITY, KS	101.75	MIDDLE INCOME	8.42
20	121	1007.00	28140	OSAWATOMIE CITY, KS	70.38	MODERATE INCOME	13.47
29	095	0003.00	28140	KANSAS CITY, MO	41.72	LOW INCOME	46.33
29	095	0006.00	28140	KANSAS CITY, MO	57.18	MODERATE INCOME	81.15
29	095	0007.00	28140	KANSAS CITY, MO	47.78	LOW INCOME	76.18
29	095	0008.00	28140	KANSAS CITY, MO	51.72	MODERATE INCOME	73.9
29	095	0009.00	28140	KANSAS CITY, MO	50.76	MODERATE INCOME	67.52
29	095	0010.00	28140	KANSAS CITY, MO	38.53	LOW INCOME	73.26
29	095	0011.00	28140	KANSAS CITY, MO	0	NA	33.18
29	095	0018.00	28140	KANSAS CITY, MO	47.77	LOW INCOME	79.5
29	095	0019.00	28140	KANSAS CITY, MO	38.21	LOW INCOME	83.73

29	095	0020.00	28140	KANSAS CITY, MO	51.29	MODERATE INCOME	82.59
29	095	0021.00	28140	KANSAS CITY, MO	34.37	LOW INCOME	84.23
29	095	0022.00	28140	KANSAS CITY, MO	43.44	LOW INCOME	83.22
29	095	0023.00	28140	KANSAS CITY, MO	35.96	LOW INCOME	86.69
29	095	0034.00	28140	KANSAS CITY, MO	53.35	MODERATE INCOME	86.37
29	095	0037.00	28140	KANSAS CITY, MO	44.21	LOW INCOME	89.32
29	095	0038.00	28140	KANSAS CITY, MO	67.81	MODERATE INCOME	90.05
29	095	0043.00	28140	KANSAS CITY, MO	118.01	MIDDLE INCOME	43.27
29	095	0044.00	28140	KANSAS CITY, MO	182.31	UPPER INCOME	23.75
29	095	0046.00	28140	KANSAS CITY, MO	129.76	UPPER INCOME	33.13
29	095	0051.00	28140	KANSAS CITY, MO	236.2	UPPER INCOME	33.52
29	095	0052.00	28140	KANSAS CITY, MO	51.39	MODERATE INCOME	80.64
29	095	0053.00	28140	KANSAS CITY, MO	87.92	MIDDLE INCOME	73.35
29	095	0054.00	28140	KANSAS CITY, MO	38.62	LOW INCOME	91.28
29	095	0055.00	28140	KANSAS CITY, MO	30.32	LOW INCOME	91.91
29	095	0056.01	28140	KANSAS CITY, MO	39.08	LOW INCOME	90.5
29	095	0056.02	28140	KANSAS CITY, MO	34.97	LOW INCOME	93.31
29	095	0057.00	28140	KANSAS CITY, MO	0	NA	95.93
29	095	0058.01	28140	KANSAS CITY, MO	55.04	MODERATE INCOME	92.63
29	095	0060.00	28140	KANSAS CITY, MO	48.14	LOW INCOME	94.32
29	095	0061.00	28140	KANSAS CITY, MO	68.21	MODERATE INCOME	92.76
29	095	0063.00	28140	KANSAS CITY, MO	18.16	LOW INCOME	79.97
29	095	0065.00	28140	KANSAS CITY, MO	113.71	MIDDLE INCOME	29.11
29	095	0066.00	28140	KANSAS CITY, MO	129.65	UPPER INCOME	23.84
29	095	0067.00	28140	KANSAS CITY, MO	82.4	MIDDLE INCOME	29.05
29	095	0069.00	28140	KANSAS CITY, MO	186.04	UPPER INCOME	23.39
29	095	0071.00	28140	KANSAS CITY, MO	82.31	MIDDLE INCOME	20.38
29	095	0072.00	28140	KANSAS CITY, MO	166.23	UPPER INCOME	12.43
29	095	0073.01	28140	KANSAS CITY, MO	71.18	MODERATE INCOME	24.97
29	095	0073.02	28140	KANSAS CITY, MO	0	NA	20.7
29	095	0074.00	28140	KANSAS CITY, MO	207.75	UPPER INCOME	20.22
29	095	0075.00	28140	KANSAS CITY, MO	55.91	MODERATE INCOME	49.39
29	095	0076.00	28140	KANSAS CITY, MO	58.67	MODERATE INCOME	87.53
29	095	0077.00	28140	KANSAS CITY, MO	45.07	LOW INCOME	86.97
29	095	0078.02	28140	KANSAS CITY, MO	52.78	MODERATE INCOME	92.83
29	095	0079.00	28140	KANSAS CITY, MO	44.92	LOW INCOME	94.08
29	095	0080.00	28140	KANSAS CITY, MO	78.54	MODERATE INCOME	93.78
29	095	0081.00	28140	KANSAS CITY, MO	56.1	MODERATE INCOME	72.08
29	095	0082.00	28140	KANSAS CITY, MO	119.96	MIDDLE INCOME	19.33
29	095	0083.00	28140	KANSAS CITY, MO	191.74	UPPER INCOME	12.92
29	095	0084.00	28140	KANSAS CITY, MO	263.77	UPPER INCOME	11
29	095	0085.00	28140	KANSAS CITY, MO	199.43	UPPER INCOME	10.08
29	095	0086.00	28140	KANSAS CITY, MO	139.52	UPPER INCOME	15.13
29	095	0087.00	28140	KANSAS CITY, MO	52.26	MODERATE INCOME	84.21

29	095	0088.00	28140	KANSAS CITY, MO	68.37	MODERATE INCOME	91.55
29	095	0089.00	28140	KANSAS CITY, MO	57.89	MODERATE INCOME	95.95
29	095	0090.00	28140	KANSAS CITY, MO	64.76	MODERATE INCOME	86.18
29	095	0091.00	28140	KANSAS CITY, MO	118.46	MIDDLE INCOME	20.32
29	095	0092.00	28140	KANSAS CITY, MO	104.36	MIDDLE INCOME	13.94
29	095	0093.00	28140	KANSAS CITY, MO	84.85	MIDDLE INCOME	18.96
29	095	0094.00	28140	KANSAS CITY, MO	87.43	MIDDLE INCOME	42.68
29	095	0095.00	28140	KANSAS CITY, MO	49.63	LOW INCOME	78.45
29	095	0096.00	28140	KANSAS CITY, MO	33.09	LOW INCOME	78.84
29	095	0097.00	28140	KANSAS CITY, MO	44.83	LOW INCOME	77.58
29	095	0098.00	28140	KANSAS CITY, MO	94.48	MIDDLE INCOME	36.88
29	095	0099.00	28140	KANSAS CITY, MO	112.59	MIDDLE INCOME	24.46
29	095	0100.01	28140	KANSAS CITY, MO	115.28	MIDDLE INCOME	25.71
29	095	0100.02	28140	KANSAS CITY, MO	92.69	MIDDLE INCOME	57.4
29	095	0101.03	28140	KANSAS CITY, MO	89.73	MIDDLE INCOME	62.18
29	095	0101.05	28140	KANSAS CITY, MO	100.75	MIDDLE INCOME	21.48
29	095	0102.01	28140	KANSAS CITY, MO	28.79	LOW INCOME	61.76
29	095	0102.03	28140	KANSAS CITY, MO	103.89	MIDDLE INCOME	42.11
29	095	0102.04	28140	KANSAS CITY, MO	69.65	MODERATE INCOME	49.08
29	095	0105.00	28140	KANSAS CITY, MO	68.28	MODERATE INCOME	70.19
29	095	0106.00	28140	KANSAS CITY, MO	86.26	MIDDLE INCOME	47.93
29	095	0107.02	28140	KANSAS CITY, MO	46.34	LOW INCOME	63.24
29	095	0110.01	28140	INDEPENDENCE CITY, MO	62.82	MODERATE INCOME	31.33
29	095	0110.02	28140	INDEPENDENCE CITY, MO	41.32	LOW INCOME	35.94
29	095	0111.00	28140	SUGAR CREEK CITY, MO	58.27	MODERATE INCOME	23.23
29	095	0112.00	28140	INDEPENDENCE CITY, MO	60.04	MODERATE INCOME	27.39
29	095	0113.00	28140	INDEPENDENCE CITY, MO	93.62	MIDDLE INCOME	29.38
29	095	0114.05	28140	INDEPENDENCE CITY, MO	31.88	LOW INCOME	53.26
29	095	0114.06	28140	INDEPENDENCE CITY, MO	75.07	MODERATE INCOME	26.28
29	095	0114.07	28140	INDEPENDENCE CITY, MO	91.08	MIDDLE INCOME	30.66
29	095	0114.08	28140	INDEPENDENCE CITY, MO	56.55	MODERATE INCOME	29.88
29	095	0114.09	28140	INDEPENDENCE CITY, MO	89.57	MIDDLE INCOME	24.67
29	095	0114.10	28140	INDEPENDENCE CITY, MO	73.21	MODERATE INCOME	22.95
29	095	0115.01	28140	INDEPENDENCE CITY, MO	47.92	LOW INCOME	34.7
29	095	0115.02	28140	INDEPENDENCE CITY, MO	66.13	MODERATE INCOME	40.75
29	095	0116.01	28140	INDEPENDENCE CITY, MO	35.85	LOW INCOME	29.14
29	095	0116.02	28140	INDEPENDENCE CITY, MO	64.83	MODERATE INCOME	22.5
29	095	0117.01	28140	INDEPENDENCE CITY, MO	38.18	LOW INCOME	40.23
29	095	0117.02	28140	INDEPENDENCE CITY, MO	49.25	LOW INCOME	31.95
29	095	0118.00	28140	INDEPENDENCE CITY, MO	69.03	MODERATE INCOME	37.21
29	095	0119.00	28140	INDEPENDENCE CITY, MO	57.06	MODERATE INCOME	36.91
29	095	0120.00	28140	INDEPENDENCE CITY, MO	59.69	MODERATE INCOME	39.81
29	095	0121.00	28140	INDEPENDENCE CITY, MO	58.31	MODERATE INCOME	36.37
29	095	0122.00	28140	INDEPENDENCE CITY, MO	74.3	MODERATE INCOME	27.57

29	095	0123.00	28140	INDEPENDENCE CITY, MO	73.78	MODERATE INCOME	22.45
29	095	0124.00	28140	INDEPENDENCE CITY, MO	71.19	MODERATE INCOME	35.34
29	095	0125.01	28140	RAYTOWN CITY, MO	73.17	MODERATE INCOME	50.85
29	095	0125.02	28140	RAYTOWN CITY, MO	78.37	MODERATE INCOME	41.3
29	095	0126.00	28140	RAYTOWN CITY, MO	82.97	MIDDLE INCOME	46.35
29	095	0127.02	28140	RAYTOWN CITY, MO	102.38	MIDDLE INCOME	46.63
29	095	0127.03	28140	RAYTOWN CITY, MO	101.98	MIDDLE INCOME	39.1
29	095	0128.02	28140	KANSAS CITY, MO	91.11	MIDDLE INCOME	49.76
29	095	0128.03	28140	RAYTOWN CITY, MO	73.25	MODERATE INCOME	41.5
29	095	0128.04	28140	RAYTOWN CITY, MO	78.55	MODERATE INCOME	56.72
29	095	0129.03	28140	KANSAS CITY, MO	51.4	MODERATE INCOME	72.24
29	095	0129.04	28140	KANSAS CITY, MO	72.07	MODERATE INCOME	69.22
29	095	0129.06	28140	KANSAS CITY, MO	69.97	MODERATE INCOME	70.25
29	095	0130.03	28140	KANSAS CITY, MO	53.61	MODERATE INCOME	71.64
29	095	0131.00	28140	KANSAS CITY, MO	53	MODERATE INCOME	67.25
29	095	0132.03	28140	KANSAS CITY, MO	49.06	LOW INCOME	76.94
29	095	0132.08	28140	KANSAS CITY, MO	50.18	MODERATE INCOME	81.73
29	095	0132.10	28140	KANSAS CITY, MO	48.95	LOW INCOME	79.17
29	095	0133.01	28140	GRANDVIEW CITY, MO	65.71	MODERATE INCOME	44.44
29	095	0133.07	28140	GRANDVIEW CITY, MO	0	NA	74.61
29	095	0133.09	28140	GRANDVIEW CITY, MO	65.57	MODERATE INCOME	69.74
29	095	0133.13	28140	GRANDVIEW CITY, MO	81.2	MIDDLE INCOME	56.59
29	095	0134.01	28140	GRANDVIEW CITY, MO	51.43	MODERATE INCOME	66.6
29	095	0134.05	28140	KANSAS CITY, MO	69.77	MODERATE INCOME	42.66
29	095	0134.07	28140	KANSAS CITY, MO	115.16	MIDDLE INCOME	18.41
29	095	0134.10	28140	GRANDVIEW CITY, MO	51.12	MODERATE INCOME	48.06
29	095	0134.16	28140	GRANDVIEW CITY, MO	103.22	MIDDLE INCOME	70.61
29	095	0134.17	28140	KANSAS CITY, MO	66.16	MODERATE INCOME	42.02
29	095	0134.18	28140	KANSAS CITY, MO	97.04	MIDDLE INCOME	28.23
29	095	0135.02	28140	GREENWOOD CITY, MO	110.57	MIDDLE INCOME	15.86
29	095	0135.04	28140	KANSAS CITY, MO	158.02	UPPER INCOME	24.71
29	095	0136.06	28140	LEES SUMMIT CITY, MO	124.91	UPPER INCOME	11.63
29	095	0136.12	28140	KANSAS CITY, MO	163.5	UPPER INCOME	22.92
29	095	0136.13	28140	LEES SUMMIT CITY, MO	89.33	MIDDLE INCOME	10.82
29	095	0136.14	28140	LEES SUMMIT CITY, MO	123.55	UPPER INCOME	20.47
29	095	0136.15	28140	LEES SUMMIT CITY, MO	104.42	MIDDLE INCOME	21.2
29	095	0137.05	28140	LEES SUMMIT CITY, MO	103.89	MIDDLE INCOME	21.02
29	095	0137.06	28140	LEES SUMMIT CITY, MO	58.72	MODERATE INCOME	32.61
29	095	0137.07	28140	LEES SUMMIT CITY, MO	103.48	MIDDLE INCOME	24.87
29	095	0137.08	28140	LEES SUMMIT CITY, MO	105.62	MIDDLE INCOME	16.96
29	095	0138.01	28140	LEES SUMMIT CITY, MO	105.3	MIDDLE INCOME	26.99
29	095	0138.03	28140	LEES SUMMIT CITY, MO	94.81	MIDDLE INCOME	21.99
29	095	0138.04	28140	LEES SUMMIT CITY, MO	124.03	UPPER INCOME	23.7
29	095	0139.02	28140	LONE JACK CITY, MO	117.99	MIDDLE INCOME	12.39

29	095	0139.04	28140	LAKE LOTAWANA CITY, MO	148.15	UPPER INCOME	22.05
29	095	0139.16	28140	LAKE LOTAWANA CITY, MO	148.87	UPPER INCOME	19.75
29	095	0139.17	28140	LAKE LOTAWANA CITY, MO	132.42	UPPER INCOME	9.8
29	095	0139.18	28140	LAKE LOTAWANA CITY, MO	160.55	UPPER INCOME	8.79
29	095	0140.02	28140	GRAIN VALLEY CITY, MO	116.67	MIDDLE INCOME	11.35
29	095	0140.04	28140	OAK GROVE CITY, MO	80.14	MIDDLE INCOME	15.7
29	095	0140.05	28140	OAK GROVE CITY, MO	97.68	MIDDLE INCOME	13.08
29	095	0140.06	28140	GRAIN VALLEY CITY, MO	100.59	MIDDLE INCOME	16.31
29	095	0140.08	28140	GRAIN VALLEY CITY, MO	67.1	MODERATE INCOME	18.6
29	095	0140.09	28140	GRAIN VALLEY CITY, MO	93.68	MIDDLE INCOME	19.24
29	095	0141.11	28140	BLUE SPRINGS CITY, MO	117.19	MIDDLE INCOME	25.19
29	095	0141.12	28140	BLUE SPRINGS CITY, MO	135.01	UPPER INCOME	18.6
29	095	0141.20	28140	BLUE SPRINGS CITY, MO	116.46	MIDDLE INCOME	18.22
29	095	0141.21	28140	BLUE SPRINGS CITY, MO	76.83	MODERATE INCOME	22.36
29	095	0141.22	28140	BLUE SPRINGS CITY, MO	140.48	UPPER INCOME	21.22
29	095	0141.23	28140	BLUE SPRINGS CITY, MO	71.84	MODERATE INCOME	27.32
29	095	0141.24	28140	BLUE SPRINGS CITY, MO	88.64	MIDDLE INCOME	24.37
29	095	0141.25	28140	BLUE SPRINGS CITY, MO	122.26	UPPER INCOME	16.49
29	095	0141.26	28140	BLUE SPRINGS CITY, MO	93.12	MIDDLE INCOME	25.29
29	095	0141.27	28140	BLUE SPRINGS CITY, MO	82.45	MIDDLE INCOME	21.39
29	095	0141.28	28140	BLUE SPRINGS CITY, MO	74.4	MODERATE INCOME	27.42
29	095	0142.03	28140	INDEPENDENCE CITY, MO	161.2	UPPER INCOME	21.85
29	095	0142.05	28140	KANSAS CITY, MO	102.94	MIDDLE INCOME	36.67
29	095	0142.06	28140	KANSAS CITY, MO	156.55	UPPER INCOME	14.71
29	095	0143.00	28140	KANSAS CITY, MO	113.99	MIDDLE INCOME	42.51
29	095	0144.00	28140	KANSAS CITY, MO	107.94	MIDDLE INCOME	49.47
29	095	0145.01	28140	INDEPENDENCE CITY, MO	88.21	MIDDLE INCOME	28.57
29	095	0145.03	28140	INDEPENDENCE CITY, MO	50.84	MODERATE INCOME	16.63
29	095	0145.04	28140	INDEPENDENCE CITY, MO	97.34	MIDDLE INCOME	20.01
29	095	0146.01	28140	INDEPENDENCE CITY, MO	71.74	MODERATE INCOME	27.04
29	095	0146.03	28140	INDEPENDENCE CITY, MO	83.69	MIDDLE INCOME	26.16
29	095	0146.04	28140	INDEPENDENCE CITY, MO	77.74	MODERATE INCOME	33.89
29	095	0147.01	28140	INDEPENDENCE CITY, MO	91.69	MIDDLE INCOME	35.05
29	095	0147.02	28140	INDEPENDENCE CITY, MO	102.87	MIDDLE INCOME	19.27
29	095	0148.04	28140	BLUE SPRINGS CITY, MO	139.35	UPPER INCOME	16.11
29	095	0148.06	28140	BLUE SPRINGS CITY, MO	111.45	MIDDLE INCOME	22.6
29	095	0149.02	28140	BUCKNER CITY, MO	74.6	MODERATE INCOME	12.72
29	095	0149.03	28140	BUCKNER CITY, MO	114.32	MIDDLE INCOME	10.59
29	095	0149.04	28140	BLUE SPRINGS CITY, MO	103.84	MIDDLE INCOME	22.27
29	095	0149.05	28140	BLUE SPRINGS CITY, MO	119.4	MIDDLE INCOME	15.99
29	095	0150.00	28140	BUCKNER CITY, MO	82	MIDDLE INCOME	11.91
29	095	0151.00	28140	INDEPENDENCE CITY, MO	79.47	MODERATE INCOME	22.63
29	095	0152.00	28140	KANSAS CIT, MO	142.29	UPPER INCOME	26.49
29	095	0153.00	28140	KANSAS CITY, MO	57.9	MODERATE INCOME	71.16

29	095	0154.01	28140	KANSAS CITY, MO	25.86	LOW INCOME	85.27
29	095	0154.02	28140	KANSAS CITY, MO	0	NA	81.88
29	095	0155.00	28140	KANSAS CITY, MO	43.88	LOW INCOME	56.02
29	095	0156.00	28140	BLUE SUMMIT CDP, MO	57.1	MODERATE INCOME	50.83
29	095	0157.01	28140	KANSAS CITY, MO	188.64	UPPER INCOME	24.38
29	095	0157.02	28140	KANSAS CITY, MO	120.05	UPPER INCOME	36.13
29	095	0158.00	28140	KANSAS CITY, MO	155.95	UPPER INCOME	19.67
29	095	0159.00	28140	KANSAS CITY, MO	0	NA	50.84
29	095	0160.00	28140	KANSAS CITY, MO	23.53	LOW INCOME	87.36
29	095	0161.00	28140	KANSAS CITY, MO	85.39	MIDDLE INCOME	90.45
29	095	0162.00	28140	KANSAS CITY, MO	59.56	MODERATE INCOME	66.76
29	095	0163.00	28140	KANSAS CITY, MO	35.17	LOW INCOME	68.92
29	095	0164.00	28140	KANSAS CITY, MO	37.97	LOW INCOME	81.39
29	095	0165.00	28140	KANSAS CITY, MO	45.26	LOW INCOME	93.79
29	095	0166.00	28140	KANSAS CITY, MO	76.53	MODERATE INCOME	91.54
29	095	0167.00	28140	KANSAS CITY, MO	68.69	MODERATE INCOME	35.77
29	095	0168.01	28140	KANSAS CITY, MO	88.53	MIDDLE INCOME	34.62
29	095	0168.02	28140	KANSAS CITY, MO	107.34	MIDDLE INCOME	26.68
29	095	0169.00	28140	KANSAS CITY, MO	61.89	MODERATE INCOME	86.49
29	095	0170.00	28140	KANSAS CITY, MO	41.5	LOW INCOME	50.84
29	095	0171.00	28140	KANSAS CITY, MO	68.12	MODERATE INCOME	94.78
29	095	0172.00	28140	KANSAS CITY, MO	72.35	MODERATE INCOME	69.12
29	095	0173.00	28140	KANSAS CITY, MO	128.52	UPPER INCOME	28.89
29	095	0174.00	28140	KANSAS CITY, MO	42.04	LOW INCOME	72.03
29	095	0175.00	28140	KANSAS CITY, MO	87.78	MIDDLE INCOME	58.15
29	095	0176.00	28140	KANSAS CITY, MO	110.39	MIDDLE INCOME	52.01
29	095	0177.00	28140	INDEPENDENCE CITY, MO	108.3	MIDDLE INCOME	22.31
29	095	0178.00	28140	KANSAS CITY, MO	70.81	MODERATE INCOME	45.08
29	095	0179.00	28140	LEES SUMMIT CITY, MO	97.21	MIDDLE INCOME	29.38
29	095	0180.00	28140	LEES SUMMIT CITY, MO	77.14	MODERATE INCOME	22.23
29	095	0181.01	28140	LEES SUMMIT CITY, MO	151.77	UPPER INCOME	19.17
29	095	0181.02	28140	KANSAS CITY, MO	144.52	UPPER INCOME	28.94
29	095	0182.00	28140	KANSAS CITY, MO	158.84	UPPER INCOME	27.17
29	095	0185.00	28140	INDEPENDENCE CITY, MO	149.24	UPPER INCOME	21.39
29	095	0186.00	28140	LEES SUMMIT CITY, MO	118.22	MIDDLE INCOME	19.8
29	095	0193.01	28140	BLUE SPRINGS CITY, MO	112.33	MIDDLE INCOME	26.71
29	095	0193.02	28140	BLUE SPRINGS CITY, MO	129.96	UPPER INCOME	19.89
29	095	9801.01	28140	KANSAS CITY, MO	0	NA	100
29	095	9808.02	28140	KANSAS CITY, MO	0	NA	100
29	095	9883.00	28140	KANSAS CITY, MO	164.8	UPPER INCOME	5.15
29	095	9891.00	28140	BLUE SPRINGS CITY, MO	0	NA	11.11
29	095	9892.00	28140	BLUE SPRINGS CITY, MO	0	NA	57.14
29	107	0901.00	28140	LEXINGTON CITY, MO	79.12	MODERATE INCOME	10
29	107	0902.00	28140	DOVER TOWN, MO	93.44	MIDDLE INCOME	16.55

29	107	0903.00	28140	BLACKBURN CITY, MO	70.03	MODERATE INCOME	9.95
29	107	0904.01	28140	ALMA CITY, MO	83.52	MIDDLE INCOME	10.02
29	107	0904.02	28140	HIGGINSVILLE CITY, MO	68.38	MODERATE INCOME	14.77
29	107	0905.00	28140	CONCORDIA CITY, MO	93.4	MIDDLE INCOME	8.21
29	107	0906.01	28140	ODESSA CITY, MO	92.22	MIDDLE INCOME	10.56
29	107	0906.02	28140	BATES CITY, MO	111.19	MIDDLE INCOME	8.16