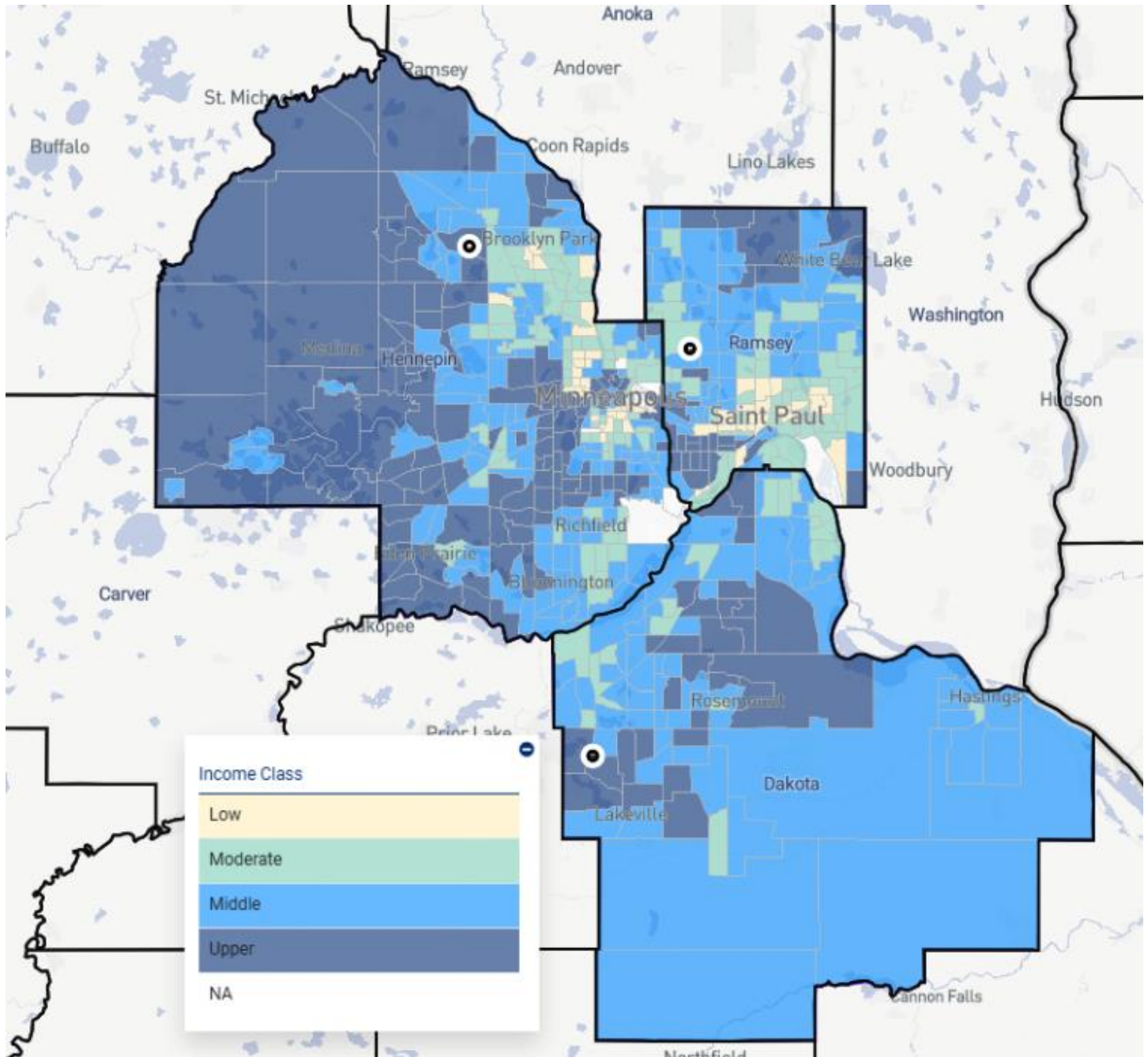


Minneapolis Minnesota Assessment Area



The Minneapolis Minnesota Assessment Area consists of Hennepin, Ramsey, and Dakota counties; and has 3 banking centers in the assessment area listed below and indicated on the map with a black dot.

Banking Center	County	Census Tract Category
Maple Grove (527)	Hennepin	Upper
Lakeville (528)	Dakota	Upper
Roseville (530)	Ramsey	Moderate

State	County	Census Tract	MSA/MD	Place	% Median Income	Tract Income Category	Minority %
27	037	0601.01	33460	WEST ST. PAUL CITY, MN	89.89	MIDDLE INCOME	38.59
27	037	0601.02	33460	WEST ST. PAUL CITY, MN	86.42	MIDDLE INCOME	28.65
27	037	0601.03	33460	WEST ST. PAUL CITY, MN	113.72	MIDDLE INCOME	18.44
27	037	0601.04	33460	WEST ST. PAUL CITY, MN	72.17	MODERATE INCOME	35.84
27	037	0601.05	33460	WEST ST. PAUL CITY, MN	58.44	MODERATE INCOME	48.11
27	037	0602.01	33460	SOUTH ST. PAUL CITY, MN	71.63	MODERATE INCOME	31.05
27	037	0602.02	33460	SOUTH ST. PAUL CITY, MN	92.56	MIDDLE INCOME	25.3
27	037	0603.01	33460	SOUTH ST. PAUL CITY, MN	64.44	MODERATE INCOME	32.54
27	037	0603.02	33460	SOUTH ST. PAUL CITY, MN	87.34	MIDDLE INCOME	27.81
27	037	0604.01	33460	SOUTH ST. PAUL CITY, MN	76.77	MODERATE INCOME	31.14
27	037	0604.02	33460	SOUTH ST. PAUL CITY, MN	63.07	MODERATE INCOME	35.06
27	037	0605.02	33460	INVER GROVE HEIGHTS CITY, MN	74.77	MODERATE INCOME	32.01
27	037	0605.03	33460	INVER GROVE HEIGHTS CITY, MN	86.42	MIDDLE INCOME	32.74
27	037	0605.05	33460	INVER GROVE HEIGHTS CITY, MN	88.82	MIDDLE INCOME	38.47
27	037	0605.06	33460	INVER GROVE HEIGHTS CITY, MN	103.56	MIDDLE INCOME	25
27	037	0605.07	33460	INVER GROVE HEIGHTS CITY, MN	110.48	MIDDLE INCOME	21.92
27	037	0605.08	33460	INVER GROVE HEIGHTS CITY, MN	139.28	UPPER INCOME	20.85
27	037	0605.09	33460	INVER GROVE HEIGHTS CITY, MN	107.32	MIDDLE INCOME	21.85
27	037	0606.03	33460	LILYDALE CITY, MN	135.31	UPPER INCOME	11
27	037	0606.04	33460	LILYDALE CITY, MN	153.14	UPPER INCOME	9.46
27	037	0606.05	33460	MENDOTA CITY, MN	81.85	MIDDLE INCOME	20.76
27	037	0606.06	33460	MENDOTA HEIGHTS CITY, MN	154.89	UPPER INCOME	10.92
27	037	0607.09	33460	BURNSVILLE CITY, MN	104	MIDDLE INCOME	38.93
27	037	0607.10	33460	BURNSVILLE CITY, MN	79.3	MODERATE INCOME	50.58
27	037	0607.11	33460	BURNSVILLE CITY, MN	51.65	MODERATE INCOME	38.33
27	037	0607.13	33460	BURNSVILLE CITY, MN	91.14	MIDDLE INCOME	27.25
27	037	0607.14	33460	BURNSVILLE CITY, MN	93.35	MIDDLE INCOME	28.93
27	037	0607.16	33460	EAGAN CITY, MN	133.3	UPPER INCOME	28.38
27	037	0607.17	33460	EAGAN CITY, MN	113	MIDDLE INCOME	33.89
27	037	0607.21	33460	EAGAN CITY, MN	103.53	MIDDLE INCOME	33.58
27	037	0607.25	33460	EAGAN CITY, MN	88.03	MIDDLE INCOME	40.24
27	037	0607.26	33460	EAGAN CITY, MN	65.24	MODERATE INCOME	42.24
27	037	0607.27	33460	EAGAN CITY, MN	82.87	MIDDLE INCOME	39.89
27	037	0607.28	33460	EAGAN CITY, MN	134.67	UPPER INCOME	30.25
27	037	0607.29	33460	EAGAN CITY, MN	151.74	UPPER INCOME	23.18
27	037	0607.31	33460	EAGAN CITY, MN	129.83	UPPER INCOME	21.92
27	037	0607.32	33460	EAGAN CITY, MN	149.53	UPPER INCOME	19.33
27	037	0607.33	33460	EAGAN CITY, MN	80.54	MIDDLE INCOME	30.16

27	037	0607.34	33460	EAGAN CITY, MN	134.5	UPPER INCOME	24.62
27	037	0607.35	33460	EAGAN CITY, MN	68.1	MODERATE INCOME	36.06
27	037	0607.37	33460	BURNSVILLE CITY, MN	73.48	MODERATE INCOME	40.37
27	037	0607.38	33460	BURNSVILLE CITY, MN	93.84	MIDDLE INCOME	41.69
27	037	0607.39	33460	BURNSVILLE CITY, MN	90.24	MIDDLE INCOME	43.35
27	037	0607.42	33460	BURNSVILLE CITY, MN	112	MIDDLE INCOME	18.3
27	037	0607.43	33460	EAGAN CITY, MN	85.07	MIDDLE INCOME	57.38
27	037	0607.44	33460	EAGAN CITY, MN	126.99	UPPER INCOME	22.33
27	037	0607.45	33460	BURNSVILLE CITY, MN	83.95	MIDDLE INCOME	44.46
27	037	0607.46	33460	BURNSVILLE CITY, MN	73.69	MODERATE INCOME	36.1
27	037	0607.47	33460	BURNSVILLE CITY, MN	89.56	MIDDLE INCOME	39.37
27	037	0607.48	33460	BURNSVILLE CITY, MN	101.82	MIDDLE INCOME	38.65
27	037	0607.49	33460	EAGAN CITY, MN	83.47	MIDDLE INCOME	30.3
27	037	0607.50	33460	EAGAN CITY, MN	68.76	MODERATE INCOME	35.43
27	037	0607.51	33460	EAGAN CITY, MN	174.58	UPPER INCOME	22.42
27	037	0607.52	33460	EAGAN CITY, MN	143.56	UPPER INCOME	16.07
27	037	0607.53	33460	BURNSVILLE CITY, MN	59.38	MODERATE INCOME	47.18
27	037	0607.54	33460	BURNSVILLE CITY, MN	92.54	MIDDLE INCOME	40.99
27	037	0608.05	33460	APPLE VALLEY CITY, MN	81.26	MIDDLE INCOME	59.68
27	037	0608.06	33460	APPLE VALLEY CITY, MN	116.56	MIDDLE INCOME	21.78
27	037	0608.11	33460	APPLE VALLEY CITY, MN	83.18	MIDDLE INCOME	27.63
27	037	0608.12	33460	APPLE VALLEY CITY, MN	95.42	MIDDLE INCOME	31.68
27	037	0608.13	33460	LAKEVILLE CITY, MN	122.7	UPPER INCOME	20.52
27	037	0608.14	33460	LAKEVILLE CITY, MN	102.95	MIDDLE INCOME	18.44
27	037	0608.15	33460	LAKEVILLE CITY, MN	128.3	UPPER INCOME	18.84
27	037	0608.16	33460	LAKEVILLE CITY, MN	153.32	UPPER INCOME	17.1
27	037	0608.19	33460	LAKEVILLE CITY, MN	130.45	UPPER INCOME	18.62
27	037	0608.22	33460	APPLE VALLEY CITY, MN	109.9	MIDDLE INCOME	17.73
27	037	0608.23	33460	APPLE VALLEY CITY, MN	137.65	UPPER INCOME	18.87
27	037	0608.24	33460	APPLE VALLEY CITY, MN	99.59	MIDDLE INCOME	19.42
27	037	0608.28	33460	APPLE VALLEY CITY, MN	80.84	MIDDLE INCOME	41.63
27	037	0608.29	33460	APPLE VALLEY CITY, MN	81.39	MIDDLE INCOME	42.38
27	037	0608.30	33460	LAKEVILLE CITY, MN	99.43	MIDDLE INCOME	26.97
27	037	0608.31	33460	LAKEVILLE CITY, MN	147.58	UPPER INCOME	23.24
27	037	0608.32	33460	LAKEVILLE CITY, MN	104.59	MIDDLE INCOME	29.78
27	037	0608.33	33460	LAKEVILLE CITY, MN	95.42	MIDDLE INCOME	25.47
27	037	0608.34	33460	LAKEVILLE CITY, MN	161.63	UPPER INCOME	12.58
27	037	0608.35	33460	LAKEVILLE CITY, MN	117.65	MIDDLE INCOME	16.16
27	037	0608.36	33460	LAKEVILLE CITY, MN	88.72	MIDDLE INCOME	27.42
27	037	0608.37	33460	LAKEVILLE CITY, MN	127.38	UPPER INCOME	20.14
27	037	0608.38	33460	APPLE VALLEY CITY, MN	90.6	MIDDLE INCOME	23.04
27	037	0608.39	33460	APPLE VALLEY CITY, MN	126.04	UPPER INCOME	34.35
27	037	0608.40	33460	APPLE VALLEY CITY, MN	137.99	UPPER INCOME	15.85
27	037	0608.41	33460	APPLE VALLEY CITY, MN	102.45	MIDDLE INCOME	18.44

27	037	0609.02	33460	FARMINGTON CITY, MN	120.61	UPPER INCOME	12.86
27	037	0609.04	33460	FARMINGTON CITY, MN	71.88	MODERATE INCOME	18.96
27	037	0609.05	33460	FARMINGTON CITY, MN	90.16	MIDDLE INCOME	20.12
27	037	0609.06	33460	FARMINGTON CITY, MN	125.51	UPPER INCOME	16.13
27	037	0609.07	33460	FARMINGTON CITY, MN	116.23	MIDDLE INCOME	19.23
27	037	0610.01	33460	COATES CITY, MN	117.21	MIDDLE INCOME	8.76
27	037	0610.03	33460	ROSEMOUNT CITY, MN	152.4	UPPER INCOME	19.52
27	037	0610.05	33460	ROSEMOUNT CITY, MN	78.99	MODERATE INCOME	25.34
27	037	0610.07	33460	ROSEMOUNT CITY, MN	112.88	MIDDLE INCOME	22.08
27	037	0610.08	33460	ROSEMOUNT CITY, MN	87.12	MIDDLE INCOME	23.06
27	037	0610.09	33460	ROSEMOUNT CITY, MN	131.33	UPPER INCOME	21.98
27	037	0610.10	33460	ROSEMOUNT CITY, MN	170.8	UPPER INCOME	19.58
27	037	0610.11	33460	ROSEMOUNT CITY, MN	98.94	MIDDLE INCOME	14.84
27	037	0611.02	33460	HASTINGS CITY, MN	94.13	MIDDLE INCOME	14.63
27	037	0611.05	33460	HASTINGS CITY, MN	78.5	MODERATE INCOME	11.43
27	037	0611.06	33460	HASTINGS CITY, MN	83.19	MIDDLE INCOME	10.67
27	037	0611.09	33460	HASTINGS CITY, MN	82.68	MIDDLE INCOME	15.9
27	037	0611.10	33460	HASTINGS CITY, MN	84.79	MIDDLE INCOME	14.23
27	037	0611.11	33460	HASTINGS CITY, MN	113.71	MIDDLE INCOME	6.68
27	037	0611.12	33460	HASTINGS CITY, MN	107.82	MIDDLE INCOME	9.7
27	037	0614.01	33460		117.72	MIDDLE INCOME	8.2
27	037	0614.02	33460	HAMPTON CITY, MN	96.17	MIDDLE INCOME	6.15
27	037	0615.01	33460	LAKEVILLE CITY, MN	102.58	MIDDLE INCOME	5.81
27	037	0615.02	33460	NORTHFIELD CITY, MN	101.88	MIDDLE INCOME	8.87
27	053	0001.01	33460	MINNEAPOLIS CITY, MN	79	MODERATE INCOME	67.26
27	053	0001.02	33460	MINNEAPOLIS CITY, MN	46.38	LOW INCOME	65.01
27	053	0003.00	33460	MINNEAPOLIS CITY, MN	85.45	MIDDLE INCOME	35.29
27	053	0006.01	33460	MINNEAPOLIS CITY, MN	81.68	MIDDLE INCOME	26.53
27	053	0006.03	33460	MINNEAPOLIS CITY, MN	136.64	UPPER INCOME	20.27
27	053	0011.00	33460	MINNEAPOLIS CITY, MN	66.96	MODERATE INCOME	31.91
27	053	0017.00	33460	MINNEAPOLIS CITY, MN	65.82	MODERATE INCOME	48.39
27	053	0022.00	33460	MINNEAPOLIS CITY, MN	45.76	LOW INCOME	88.08
27	053	0024.00	33460	MINNEAPOLIS CITY, MN	79.55	MODERATE INCOME	28.26
27	053	0027.00	33460	MINNEAPOLIS CITY, MN	62.89	MODERATE INCOME	82.46
27	053	0032.00	33460	MINNEAPOLIS CITY, MN	58.41	MODERATE INCOME	71.37
27	053	0033.00	33460	MINNEAPOLIS CITY, MN	36.88	LOW INCOME	91.8
27	053	0038.01	33460	MINNEAPOLIS CITY, MN	64.14	MODERATE INCOME	34.75
27	053	0038.02	33460	MINNEAPOLIS CITY, MN	0	NA	23.6
27	053	0059.01	33460	MINNEAPOLIS CITY, MN	32.42	LOW INCOME	61.84
27	053	0059.02	33460	MINNEAPOLIS CITY, MN	39.09	LOW INCOME	79.97
27	053	0068.00	33460	MINNEAPOLIS CITY, MN	15.77	LOW INCOME	41.44
27	053	0077.00	33460	MINNEAPOLIS CITY, MN	0	NA	41.45
27	053	0078.01	33460	MINNEAPOLIS CITY, MN	43.16	LOW INCOME	70.89
27	053	0081.00	33460	MINNEAPOLIS CITY, MN	66.9	MODERATE INCOME	19.27

27	053	0082.00	33460	MINNEAPOLIS CITY, MN	54.93	MODERATE INCOME	56.65
27	053	0083.00	33460	MINNEAPOLIS CITY, MN	45.8	LOW INCOME	71.84
27	053	0084.00	33460	MINNEAPOLIS CITY, MN	71.93	MODERATE INCOME	72.03
27	053	0085.00	33460	MINNEAPOLIS CITY, MN	50.3	MODERATE INCOME	59.5
27	053	0095.00	33460	MINNEAPOLIS CITY, MN	70.25	MODERATE INCOME	58.74
27	053	0096.00	33460	MINNEAPOLIS CITY, MN	88.3	MIDDLE INCOME	37.55
27	053	0106.00	33460	MINNEAPOLIS CITY, MN	137.45	UPPER INCOME	12.48
27	053	0107.00	33460	MINNEAPOLIS CITY, MN	161.2	UPPER INCOME	12.65
27	053	0110.00	33460	MINNEAPOLIS CITY, MN	122.24	UPPER INCOME	23.4
27	053	0117.03	33460	MINNEAPOLIS CITY, MN	149.42	UPPER INCOME	13.76
27	053	0117.04	33460	MINNEAPOLIS CITY, MN	146.89	UPPER INCOME	21.07
27	053	0118.00	33460	MINNEAPOLIS CITY, MN	131.27	UPPER INCOME	17.28
27	053	0119.98	33460	MINNEAPOLIS CITY, MN	95.32	MIDDLE INCOME	21.46
27	053	0120.01	33460	MINNEAPOLIS CITY, MN	131.86	UPPER INCOME	18.97
27	053	0120.03	33460	MINNEAPOLIS CITY, MN	90.37	MIDDLE INCOME	44.8
27	053	0121.01	33460	MINNEAPOLIS CITY, MN	89.63	MIDDLE INCOME	49.33
27	053	0121.02	33460	MINNEAPOLIS CITY, MN	98.77	MIDDLE INCOME	29.71
27	053	0201.01	33460	ST. ANTHONY CITY, MN	131.63	UPPER INCOME	16.42
27	053	0201.02	33460	ST. ANTHONY CITY, MN	91.98	MIDDLE INCOME	15.36
27	053	0202.01	33460	BROOKLYN CENTER CITY, MN	72.9	MODERATE INCOME	74.2
27	053	0202.02	33460	BROOKLYN CENTER CITY, MN	49.59	LOW INCOME	72.93
27	053	0203.01	33460	BROOKLYN CENTER CITY, MN	68.52	MODERATE INCOME	63.57
27	053	0203.02	33460	BROOKLYN CENTER CITY, MN	49.95	LOW INCOME	68.95
27	053	0203.03	33460	BROOKLYN CENTER CITY, MN	78.14	MODERATE INCOME	65.86
27	053	0203.04	33460	BROOKLYN CENTER CITY, MN	58.63	MODERATE INCOME	74.25
27	053	0204.00	33460	BROOKLYN CENTER CITY, MN	64.26	MODERATE INCOME	61.17
27	053	0205.00	33460	BROOKLYN CENTER CITY, MN	69.94	MODERATE INCOME	62.2
27	053	0206.00	33460	BROOKLYN CENTER CITY, MN	73.16	MODERATE INCOME	60.07
27	053	0207.00	33460	CRYSTAL CITY, MN	83.64	MIDDLE INCOME	38.48
27	053	0208.01	33460	CRYSTAL CITY, MN	74.02	MODERATE INCOME	36.09
27	053	0208.04	33460	CRYSTAL CITY, MN	87.8	MIDDLE INCOME	39.64
27	053	0209.02	33460	CRYSTAL CITY, MN	102.06	MIDDLE INCOME	26.66
27	053	0209.03	33460	CRYSTAL CITY, MN	91.81	MIDDLE INCOME	27.86
27	053	0210.01	33460	CRYSTAL CITY, MN	76.51	MODERATE INCOME	31.14
27	053	0210.02	33460	CRYSTAL CITY, MN	85.44	MIDDLE INCOME	34.7
27	053	0211.00	33460	ROBBINSDALE CITY, MN	76.1	MODERATE INCOME	32.55
27	053	0212.00	33460	ROBBINSDALE CITY, MN	92.48	MIDDLE INCOME	24.74
27	053	0213.00	33460	ROBBINSDALE CITY, MN	79.82	MODERATE INCOME	39.62
27	053	0214.00	33460	ROBBINSDALE CITY, MN	85.71	MIDDLE INCOME	34.84
27	053	0215.01	33460	NEW HOPE CITY, MN	98.04	MIDDLE INCOME	39.23
27	053	0215.02	33460	NEW HOPE CITY, MN	45.47	LOW INCOME	58.79
27	053	0215.03	33460	NEW HOPE CITY, MN	74.3	MODERATE INCOME	38.67
27	053	0215.04	33460	CRYSTAL CITY, MN	71.28	MODERATE INCOME	30.62
27	053	0215.05	33460	NEW HOPE CITY, MN	97.14	MIDDLE INCOME	34.59

27	053	0216.01	33460	GOLDEN VALLEY CITY, MN	85.12	MIDDLE INCOME	21.82
27	053	0216.02	33460	GOLDEN VALLEY CITY, MN	122.81	UPPER INCOME	23.45
27	053	0217.00	33460	GOLDEN VALLEY CITY, MN	149.3	UPPER INCOME	18.91
27	053	0218.00	33460	GOLDEN VALLEY CITY, MN	162.76	UPPER INCOME	16.33
27	053	0219.00	33460	GOLDEN VALLEY CITY, MN	140.25	UPPER INCOME	16.84
27	053	0220.00	33460	ST. LOUIS PARK CITY, MN	123.58	UPPER INCOME	19.21
27	053	0221.01	33460	ST. LOUIS PARK CITY, MN	106.2	MIDDLE INCOME	30.74
27	053	0221.02	33460	ST. LOUIS PARK CITY, MN	106.09	MIDDLE INCOME	27.05
27	053	0222.00	33460	ST. LOUIS PARK CITY, MN	102.45	MIDDLE INCOME	20.34
27	053	0223.01	33460	ST. LOUIS PARK CITY, MN	136.34	UPPER INCOME	16.6
27	053	0223.02	33460	ST. LOUIS PARK CITY, MN	61.31	MODERATE INCOME	43.44
27	053	0224.00	33460	ST. LOUIS PARK CITY, MN	90	MIDDLE INCOME	27.05
27	053	0227.00	33460	ST. LOUIS PARK CITY, MN	94.58	MIDDLE INCOME	25.44
27	053	0228.01	33460	ST. LOUIS PARK CITY, MN	158.82	UPPER INCOME	8.95
27	053	0228.02	33460	ST. LOUIS PARK CITY, MN	142.2	UPPER INCOME	21.58
27	053	0229.01	33460	ST. LOUIS PARK CITY, MN	144.07	UPPER INCOME	18.3
27	053	0229.02	33460	ST. LOUIS PARK CITY, MN	151.12	UPPER INCOME	9.96
27	053	0230.00	33460	ST. LOUIS PARK CITY, MN	113.7	MIDDLE INCOME	18.92
27	053	0231.00	33460	EDINA CITY, MN	191.94	UPPER INCOME	13.84
27	053	0232.01	33460	HOPKINS CITY, MN	118.69	MIDDLE INCOME	29.32
27	053	0232.02	33460	HOPKINS CITY, MN	58.51	MODERATE INCOME	53.9
27	053	0233.00	33460	HOPKINS CITY, MN	97.25	MIDDLE INCOME	29.8
27	053	0234.01	33460	HOPKINS CITY, MN	57.63	MODERATE INCOME	37.12
27	053	0234.02	33460	HOPKINS CITY, MN	67.07	MODERATE INCOME	45.22
27	053	0235.01	33460	EDINA CITY, MN	112.4	MIDDLE INCOME	20.55
27	053	0235.02	33460	EDINA CITY, MN	132	UPPER INCOME	16.75
27	053	0236.00	33460	EDINA CITY, MN	240.43	UPPER INCOME	10.74
27	053	0237.00	33460	EDINA CITY, MN	198.16	UPPER INCOME	13.01
27	053	0238.01	33460	EDINA CITY, MN	207.29	UPPER INCOME	15.94
27	053	0238.02	33460	EDINA CITY, MN	143.81	UPPER INCOME	18.31
27	053	0239.01	33460	EDINA CITY, MN	145.58	UPPER INCOME	17.63
27	053	0239.02	33460	EDINA CITY, MN	192.53	UPPER INCOME	23.8
27	053	0239.03	33460	EDINA CITY, MN	131.61	UPPER INCOME	26.1
27	053	0240.03	33460	EDINA CITY, MN	111.4	MIDDLE INCOME	43.29
27	053	0240.04	33460	EDINA CITY, MN	57.75	MODERATE INCOME	30.14
27	053	0240.05	33460	EDINA CITY, MN	106.91	MIDDLE INCOME	29.69
27	053	0240.06	33460	EDINA CITY, MN	187.88	UPPER INCOME	14.73
27	053	0241.00	33460	RICHFIELD CITY, MN	83.7	MIDDLE INCOME	31.29
27	053	0242.00	33460	RICHFIELD CITY, MN	111.49	MIDDLE INCOME	21.13
27	053	0243.00	33460	RICHFIELD CITY, MN	84.33	MIDDLE INCOME	42.46
27	053	0244.00	33460	RICHFIELD CITY, MN	69.12	MODERATE INCOME	33.47
27	053	0245.00	33460	RICHFIELD CITY, MN	97.91	MIDDLE INCOME	27.58
27	053	0246.00	33460	RICHFIELD CITY, MN	92.16	MIDDLE INCOME	37.9
27	053	0247.00	33460	RICHFIELD CITY, MN	81.49	MIDDLE INCOME	35.8

27	053	0248.01	33460	RICHFIELD CITY, MN	70.2	MODERATE INCOME	49.3
27	053	0248.02	33460	RICHFIELD CITY, MN	59.03	MODERATE INCOME	62.04
27	053	0249.03	33460	RICHFIELD CITY, MN	64.11	MODERATE INCOME	66.65
27	053	0249.04	33460	RICHFIELD CITY, MN	77.07	MODERATE INCOME	50.78
27	053	0251.00	33460	BLOOMINGTON CITY, MN	83.11	MIDDLE INCOME	46.75
27	053	0252.01	33460	BLOOMINGTON CITY, MN	68.95	MODERATE INCOME	67.29
27	053	0252.05	33460	BLOOMINGTON CITY, MN	80.87	MIDDLE INCOME	42.72
27	053	0253.01	33460	BLOOMINGTON CITY, MN	111.27	MIDDLE INCOME	18.77
27	053	0253.02	33460	BLOOMINGTON CITY, MN	71.21	MODERATE INCOME	41.96
27	053	0254.01	33460	BLOOMINGTON CITY, MN	77.17	MODERATE INCOME	47.47
27	053	0254.03	33460	BLOOMINGTON CITY, MN	57.07	MODERATE INCOME	45.44
27	053	0256.01	33460	BLOOMINGTON CITY, MN	96.82	MIDDLE INCOME	33.74
27	053	0256.03	33460	BLOOMINGTON CITY, MN	97.2	MIDDLE INCOME	21.75
27	053	0256.05	33460	BLOOMINGTON CITY, MN	86.15	MIDDLE INCOME	25.14
27	053	0257.02	33460	BLOOMINGTON CITY, MN	112.1	MIDDLE INCOME	24.69
27	053	0257.03	33460	BLOOMINGTON CITY, MN	125.42	UPPER INCOME	22.58
27	053	0257.04	33460	BLOOMINGTON CITY, MN	98.52	MIDDLE INCOME	31.06
27	053	0258.01	33460	BLOOMINGTON CITY, MN	86.95	MIDDLE INCOME	32.77
27	053	0258.02	33460	BLOOMINGTON CITY, MN	110	MIDDLE INCOME	16.99
27	053	0258.03	33460	BLOOMINGTON CITY, MN	80.69	MIDDLE INCOME	29.16
27	053	0258.05	33460	BLOOMINGTON CITY, MN	109.33	MIDDLE INCOME	17.64
27	053	0259.05	33460	BLOOMINGTON CITY, MN	125.61	UPPER INCOME	11.96
27	053	0259.06	33460	BLOOMINGTON CITY, MN	97.27	MIDDLE INCOME	27.05
27	053	0259.07	33460	BLOOMINGTON CITY, MN	122.02	UPPER INCOME	18.3
27	053	0259.08	33460	BLOOMINGTON CITY, MN	133.29	UPPER INCOME	16.87
27	053	0259.09	33460	BLOOMINGTON CITY, MN	110.96	MIDDLE INCOME	26.75
27	053	0260.05	33460	EDEN PRAIRIE CITY, MN	96.24	MIDDLE INCOME	27.14
27	053	0260.06	33460	EDEN PRAIRIE CITY, MN	100.46	MIDDLE INCOME	31.41
27	053	0260.07	33460	EDEN PRAIRIE CITY, MN	134.5	UPPER INCOME	30.56
27	053	0260.13	33460	EDEN PRAIRIE CITY, MN	148.71	UPPER INCOME	17.92
27	053	0260.14	33460	CHANHASSEN CITY, MN	127.75	UPPER INCOME	18.53
27	053	0260.15	33460	EDEN PRAIRIE CITY, MN	128.14	UPPER INCOME	27.88
27	053	0260.19	33460	EDEN PRAIRIE CITY, MN	73.59	MODERATE INCOME	67.5
27	053	0260.20	33460	EDEN PRAIRIE CITY, MN	94.87	MIDDLE INCOME	35.87
27	053	0260.21	33460	EDEN PRAIRIE CITY, MN	190.67	UPPER INCOME	19.17
27	053	0260.23	33460	EDEN PRAIRIE CITY, MN	114.52	MIDDLE INCOME	35.28
27	053	0260.24	33460	EDEN PRAIRIE CITY, MN	124.25	UPPER INCOME	18.69
27	053	0260.25	33460	EDEN PRAIRIE CITY, MN	196.65	UPPER INCOME	22.86
27	053	0260.26	33460	EDEN PRAIRIE CITY, MN	236.76	UPPER INCOME	33.79
27	053	0260.27	33460	EDEN PRAIRIE CITY, MN	157.94	UPPER INCOME	19.17
27	053	0260.28	33460	EDEN PRAIRIE CITY, MN	170.39	UPPER INCOME	44.95
27	053	0261.01	33460	MINNETONKA CITY, MN	99.91	MIDDLE INCOME	14.48
27	053	0261.03	33460	MINNETONKA CITY, MN	125.32	UPPER INCOME	12.16
27	053	0261.04	33460	MINNETONKA CITY, MN	83.68	MIDDLE INCOME	26.82

27	053	0262.01	33460	MINNETONKA CITY, MN	145.86	UPPER INCOME	11.85
27	053	0262.02	33460	MINNETONKA CITY, MN	159.62	UPPER INCOME	12.84
27	053	0262.05	33460	MINNETONKA CITY, MN	147.86	UPPER INCOME	13.32
27	053	0262.06	33460	MINNETONKA CITY, MN	143.72	UPPER INCOME	10.36
27	053	0262.07	33460	MINNETONKA CITY, MN	124.28	UPPER INCOME	22.95
27	053	0262.08	33460	MINNETONKA CITY, MN	136.1	UPPER INCOME	11.24
27	053	0263.01	33460	MINNETONKA CITY, MN	196.73	UPPER INCOME	12.93
27	053	0263.02	33460	MINNETONKA CITY, MN	119.41	MIDDLE INCOME	9.92
27	053	0264.03	33460	MINNETONKA CITY, MN	92.18	MIDDLE INCOME	33.85
27	053	0264.04	33460	MINNETONKA CITY, MN	145.03	UPPER INCOME	13.88
27	053	0264.05	33460	MINNETONKA CITY, MN	106.27	MIDDLE INCOME	25.75
27	053	0264.06	33460	MINNETONKA CITY, MN	64.31	MODERATE INCOME	25.86
27	053	0265.05	33460	PLYMOUTH CITY, MN	127.94	UPPER INCOME	19.63
27	053	0265.07	33460	PLYMOUTH CITY, MN	110.4	MIDDLE INCOME	24.59
27	053	0265.08	33460	PLYMOUTH CITY, MN	132.01	UPPER INCOME	18.6
27	053	0265.09	33460	PLYMOUTH CITY, MN	148.78	UPPER INCOME	14.14
27	053	0265.10	33460	PLYMOUTH CITY, MN	98.42	MIDDLE INCOME	23.35
27	053	0265.11	33460	PLYMOUTH CITY, MN	66.73	MODERATE INCOME	40.83
27	053	0265.14	33460	PLYMOUTH CITY, MN	91.31	MIDDLE INCOME	38.87
27	053	0265.15	33460	PLYMOUTH CITY, MN	104.8	MIDDLE INCOME	20.08
27	053	0265.16	33460	MEDICINE LAKE CITY, MN	109.74	MIDDLE INCOME	20.07
27	053	0266.05	33460	PLYMOUTH CITY, MN	145.77	UPPER INCOME	22.75
27	053	0266.06	33460	PLYMOUTH CITY, MN	141.1	UPPER INCOME	17.2
27	053	0266.09	33460	PLYMOUTH CITY, MN	126.39	UPPER INCOME	13.43
27	053	0266.10	33460	PLYMOUTH CITY, MN	174.97	UPPER INCOME	16.28
27	053	0266.11	33460	PLYMOUTH CITY, MN	136.46	UPPER INCOME	27.93
27	053	0266.14	33460	PLYMOUTH CITY, MN	162.4	UPPER INCOME	19.49
27	053	0266.15	33460	PLYMOUTH CITY, MN	158.85	UPPER INCOME	31.87
27	053	0266.16	33460	PLYMOUTH CITY, MN	195.2	UPPER INCOME	44.3
27	053	0266.17	33460	PLYMOUTH CITY, MN	133.93	UPPER INCOME	25.97
27	053	0267.02	33460	OSSEO CITY, MN	69.54	MODERATE INCOME	20.57
27	053	0267.06	33460	MAPLE GROVE CITY, MN	115.51	MIDDLE INCOME	15.63
27	053	0267.07	33460	MAPLE GROVE CITY, MN	103.34	MIDDLE INCOME	18.75
27	053	0267.08	33460	MAPLE GROVE CITY, MN	106.89	MIDDLE INCOME	17.56
27	053	0267.11	33460	MAPLE GROVE CITY, MN	98.82	MIDDLE INCOME	19.85
27	053	0267.12	33460	MAPLE GROVE CITY, MN	88.46	MIDDLE INCOME	27.65
27	053	0267.13	33460	MAPLE GROVE CITY, MN	122.74	UPPER INCOME	19.36
27	053	0267.17	33460	MAPLE GROVE CITY, MN	126.11	UPPER INCOME	29.71
27	053	0267.18	33460	MAPLE GROVE CITY, MN	127.31	UPPER INCOME	21.69
27	053	0267.19	33460	MAPLE GROVE CITY, MN	157.14	UPPER INCOME	16.1
27	053	0267.20	33460	MAPLE GROVE CITY, MN	146.93	UPPER INCOME	21.99
27	053	0267.21	33460	MAPLE GROVE CITY, MN	110.52	MIDDLE INCOME	12.71
27	053	0267.22	33460	MAPLE GROVE CITY, MN	178.41	UPPER INCOME	32.56
27	053	0267.23	33460	MAPLE GROVE CITY, MN	191.51	UPPER INCOME	22.32

27	053	0267.24	33460	MAPLE GROVE CITY, MN	136.3	UPPER INCOME	31.16
27	053	0267.25	33460	MAPLE GROVE CITY, MN	101.36	MIDDLE INCOME	23.61
27	053	0267.26	33460	MAPLE GROVE CITY, MN	119.01	MIDDLE INCOME	27.5
27	053	0268.07	33460	BROOKLYN PARK CITY, MN	70.09	MODERATE INCOME	48.32
27	053	0268.09	33460	BROOKLYN PARK CITY, MN	51.08	MODERATE INCOME	85.58
27	053	0268.11	33460	BROOKLYN PARK CITY, MN	72.81	MODERATE INCOME	69.74
27	053	0268.12	33460	BROOKLYN PARK CITY, MN	97.97	MIDDLE INCOME	49.29
27	053	0268.14	33460	BROOKLYN PARK CITY, MN	86.15	MIDDLE INCOME	69.62
27	053	0268.15	33460	BROOKLYN PARK CITY, MN	84.73	MIDDLE INCOME	59.01
27	053	0268.16	33460	BROOKLYN PARK CITY, MN	83.53	MIDDLE INCOME	71.12
27	053	0268.18	33460	BROOKLYN PARK CITY, MN	67.92	MODERATE INCOME	70.49
27	053	0268.19	33460	BROOKLYN PARK CITY, MN	43.36	LOW INCOME	84.82
27	053	0268.22	33460	BROOKLYN PARK CITY, MN	100.56	MIDDLE INCOME	39.47
27	053	0268.23	33460	BROOKLYN PARK CITY, MN	126.34	UPPER INCOME	51.14
27	053	0268.24	33460	BROOKLYN PARK CITY, MN	131.9	UPPER INCOME	41.36
27	053	0268.25	33460	BROOKLYN PARK CITY, MN	118.34	MIDDLE INCOME	56.19
27	053	0268.26	33460	BROOKLYN PARK CITY, MN	158.07	UPPER INCOME	45.08
27	053	0268.27	33460	BROOKLYN PARK CITY, MN	30.85	LOW INCOME	76.42
27	053	0268.28	33460	BROOKLYN PARK CITY, MN	52.89	MODERATE INCOME	77.17
27	053	0269.03	33460	CHAMPLIN CITY, MN	85.83	MIDDLE INCOME	19.27
27	053	0269.06	33460	CHAMPLIN CITY, MN	93.46	MIDDLE INCOME	24.2
27	053	0269.07	33460	CHAMPLIN CITY, MN	133.19	UPPER INCOME	19.07
27	053	0269.08	33460	CHAMPLIN CITY, MN	101.12	MIDDLE INCOME	23.66
27	053	0269.10	33460	DAYTON CITY, MN	121.35	UPPER INCOME	20.69
27	053	0269.11	33460	ROGERS CITY, MN	126.53	UPPER INCOME	14.17
27	053	0269.12	33460	HANOVER CITY, MN	146.65	UPPER INCOME	9.08
27	053	0270.01	33460	GREENFIELD CITY, MN	128.03	UPPER INCOME	9.74
27	053	0270.02	33460	INDEPENDENCE CITY, MN	131.18	UPPER INCOME	8.44
27	053	0271.01	33460	LORETTO CITY, MN	168.84	UPPER INCOME	18.12
27	053	0271.02	33460	CORCORAN CITY, MN	141.72	UPPER INCOME	19.51
27	053	0272.02	33460	LONG LAKE CITY, MN	114.8	MIDDLE INCOME	13.21
27	053	0272.03	33460	MINNETONKA BEACH CITY, MN	124.78	UPPER INCOME	8.64
27	053	0272.04	33460	ORONO CITY, MN	195.54	UPPER INCOME	8.12
27	053	0272.05	33460	ORONO CITY, MN	230.92	UPPER INCOME	8.46
27	053	0273.00	33460	WAYZATA CITY, MN	124.56	UPPER INCOME	13.04
27	053	0274.00	33460	DEEPHAVEN CITY, MN	158.37	UPPER INCOME	6.93
27	053	0275.01	33460	EXCELSIOR CITY, MN	139.85	UPPER INCOME	11.96
27	053	0275.03	33460	SHOREWOOD CITY, MN	172.18	UPPER INCOME	9.41
27	053	0275.04	33460	SHOREWOOD CITY, MN	170.43	UPPER INCOME	10.2
27	053	0276.01	33460	MOUND CITY, MN	108.89	MIDDLE INCOME	12.92
27	053	0276.02	33460	MOUND CITY, MN	113.96	MIDDLE INCOME	11.59
27	053	0277.01	33460	MINNETRISTA CITY, MN	178.61	UPPER INCOME	7.6
27	053	0277.02	33460	ST. BONIFACIUS CITY, MN	110.56	MIDDLE INCOME	9.84
27	053	0277.03	33460	MINNETRISTA CITY, MN	139.24	UPPER INCOME	9.79

27	053	1002.00	33460	MINNEAPOLIS CITY, MN	68.08	MODERATE INCOME	55.05
27	053	1004.00	33460	MINNEAPOLIS CITY, MN	35.91	LOW INCOME	75.3
27	053	1005.00	33460	MINNEAPOLIS CITY, MN	65.31	MODERATE INCOME	30.94
27	053	1007.00	33460	MINNEAPOLIS CITY, MN	65.09	MODERATE INCOME	54.09
27	053	1008.00	33460	MINNEAPOLIS CITY, MN	69.45	MODERATE INCOME	73.15
27	053	1009.00	33460	MINNEAPOLIS CITY, MN	58.66	MODERATE INCOME	78.2
27	053	1012.00	33460	MINNEAPOLIS CITY, MN	102.89	MIDDLE INCOME	21.62
27	053	1013.00	33460	MINNEAPOLIS CITY, MN	57.3	MODERATE INCOME	83.89
27	053	1016.00	33460	MINNEAPOLIS CITY, MN	42.87	LOW INCOME	83.59
27	053	1018.00	33460	MINNEAPOLIS CITY, MN	59.76	MODERATE INCOME	47.34
27	053	1019.00	33460	MINNEAPOLIS CITY, MN	100.61	MIDDLE INCOME	30.57
27	053	1020.00	33460	MINNEAPOLIS CITY, MN	69.01	MODERATE INCOME	72.12
27	053	1021.00	33460	MINNEAPOLIS CITY, MN	32.45	LOW INCOME	84.76
27	053	1025.00	33460	MINNEAPOLIS CITY, MN	0	NA	29.61
27	053	1026.00	33460	MINNEAPOLIS CITY, MN	79.58	MODERATE INCOME	37.77
27	053	1028.00	33460	MINNEAPOLIS CITY, MN	43.71	LOW INCOME	83.79
27	053	1030.00	33460	MINNEAPOLIS CITY, MN	136.01	UPPER INCOME	22.6
27	053	1031.00	33460	MINNEAPOLIS CITY, MN	87.19	MIDDLE INCOME	31.56
27	053	1034.00	33460	MINNEAPOLIS CITY, MN	34.06	LOW INCOME	91.61
27	053	1036.00	33460	MINNEAPOLIS CITY, MN	138.79	UPPER INCOME	16.17
27	053	1037.00	33460	MINNEAPOLIS CITY, MN	123.26	UPPER INCOME	27.37
27	053	1039.00	33460	MINNEAPOLIS CITY, MN	0	NA	27.64
27	053	1040.01	33460	MINNEAPOLIS CITY, MN	0	NA	35.16
27	053	1040.02	33460	MINNEAPOLIS CITY, MN	67.82	MODERATE INCOME	33.4
27	053	1041.00	33460	MINNEAPOLIS CITY, MN	46.63	LOW INCOME	65.24
27	053	1044.00	33460	MINNEAPOLIS CITY, MN	120.35	UPPER INCOME	49.57
27	053	1048.01	33460	MINNEAPOLIS CITY, MN	20.94	LOW INCOME	95.83
27	053	1048.02	33460	MINNEAPOLIS CITY, MN	39.24	LOW INCOME	50.14
27	053	1049.01	33460	MINNEAPOLIS CITY, MN	0	NA	29.38
27	053	1049.02	33460	MINNEAPOLIS CITY, MN	46.35	LOW INCOME	53.52
27	053	1051.00	33460	MINNEAPOLIS CITY, MN	126.6	UPPER INCOME	15.5
27	053	1052.01	33460	MINNEAPOLIS CITY, MN	105.45	MIDDLE INCOME	26.16
27	053	1052.04	33460	MINNEAPOLIS CITY, MN	142.04	UPPER INCOME	40.21
27	053	1054.00	33460	MINNEAPOLIS CITY, MN	112.7	MIDDLE INCOME	41.01
27	053	1055.00	33460	MINNEAPOLIS CITY, MN	209.82	UPPER INCOME	16.98
27	053	1056.00	33460	MINNEAPOLIS CITY, MN	79.3	MODERATE INCOME	38.52
27	053	1057.00	33460	MINNEAPOLIS CITY, MN	99.78	MIDDLE INCOME	47.65
27	053	1060.00	33460	MINNEAPOLIS CITY, MN	32.13	LOW INCOME	82.89
27	053	1062.00	33460	MINNEAPOLIS CITY, MN	51.84	MODERATE INCOME	66.68
27	053	1064.00	33460	MINNEAPOLIS CITY, MN	165.22	UPPER INCOME	53.94
27	053	1065.00	33460	MINNEAPOLIS CITY, MN	240.43	UPPER INCOME	14.59
27	053	1066.00	33460	MINNEAPOLIS CITY, MN	130.23	UPPER INCOME	16.33
27	053	1067.00	33460	MINNEAPOLIS CITY, MN	103.98	MIDDLE INCOME	23.57
27	053	1069.00	33460	MINNEAPOLIS CITY, MN	64.91	MODERATE INCOME	40.53

27	053	1070.00	33460	MINNEAPOLIS CITY, MN	63.86	MODERATE INCOME	51.6
27	053	1074.00	33460	MINNEAPOLIS CITY, MN	65.36	MODERATE INCOME	43.41
27	053	1075.00	33460	MINNEAPOLIS CITY, MN	89.7	MIDDLE INCOME	22.32
27	053	1076.00	33460	MINNEAPOLIS CITY, MN	97.67	MIDDLE INCOME	17.92
27	053	1080.00	33460	MINNEAPOLIS CITY, MN	187.69	UPPER INCOME	19.3
27	053	1086.00	33460	MINNEAPOLIS CITY, MN	53.01	MODERATE INCOME	59.48
27	053	1087.00	33460	MINNEAPOLIS CITY, MN	81.97	MIDDLE INCOME	45.18
27	053	1088.00	33460	MINNEAPOLIS CITY, MN	55.7	MODERATE INCOME	43.78
27	053	1089.00	33460	MINNEAPOLIS CITY, MN	83.17	MIDDLE INCOME	20.69
27	053	1090.00	33460	MINNEAPOLIS CITY, MN	150.96	UPPER INCOME	14.52
27	053	1091.00	33460	MINNEAPOLIS CITY, MN	127.21	UPPER INCOME	15.93
27	053	1092.00	33460	MINNEAPOLIS CITY, MN	106.99	MIDDLE INCOME	22.63
27	053	1093.00	33460	MINNEAPOLIS CITY, MN	98.37	MIDDLE INCOME	32.81
27	053	1094.00	33460	MINNEAPOLIS CITY, MN	63.71	MODERATE INCOME	76.32
27	053	1097.00	33460	MINNEAPOLIS CITY, MN	91.18	MIDDLE INCOME	44.4
27	053	1098.00	33460	MINNEAPOLIS CITY, MN	166.7	UPPER INCOME	17.32
27	053	1099.00	33460	MINNEAPOLIS CITY, MN	116.86	MIDDLE INCOME	22.43
27	053	1100.00	33460	MINNEAPOLIS CITY, MN	63.9	MODERATE INCOME	70.89
27	053	1101.00	33460	MINNEAPOLIS CITY, MN	101.2	MIDDLE INCOME	30.37
27	053	1102.00	33460	MINNEAPOLIS CITY, MN	88.38	MIDDLE INCOME	23.13
27	053	1104.00	33460	MINNEAPOLIS CITY, MN	86.18	MIDDLE INCOME	37.12
27	053	1105.00	33460	MINNEAPOLIS CITY, MN	97.97	MIDDLE INCOME	18.88
27	053	1108.00	33460	MINNEAPOLIS CITY, MN	99.22	MIDDLE INCOME	20.8
27	053	1109.00	33460	MINNEAPOLIS CITY, MN	110.6	MIDDLE INCOME	41.44
27	053	1111.00	33460	MINNEAPOLIS CITY, MN	119.95	MIDDLE INCOME	21.39
27	053	1112.00	33460	MINNEAPOLIS CITY, MN	151.52	UPPER INCOME	12.78
27	053	1113.00	33460	MINNEAPOLIS CITY, MN	179.48	UPPER INCOME	14.63
27	053	1114.00	33460	MINNEAPOLIS CITY, MN	182.54	UPPER INCOME	14.23
27	053	1115.00	33460	MINNEAPOLIS CITY, MN	155.1	UPPER INCOME	19.89
27	053	1116.00	33460	MINNEAPOLIS CITY, MN	144.2	UPPER INCOME	18.45
27	053	1225.00	33460	ST. LOUIS PARK CITY, MN	95.76	MIDDLE INCOME	28.57
27	053	1226.00	33460	ST. LOUIS PARK CITY, MN	121.72	UPPER INCOME	19.08
27	053	1255.00	33460	BLOOMINGTON CITY, MN	71.45	MODERATE INCOME	43.76
27	053	1256.00	33460	MINNEAPOLIS CITY, MN	125.26	UPPER INCOME	40.78
27	053	1257.00	33460	MINNEAPOLIS CITY, MN	49.19	LOW INCOME	81.93
27	053	1258.00	33460	MINNEAPOLIS CITY, MN	50.9	MODERATE INCOME	78.92
27	053	1259.00	33460	MINNEAPOLIS CITY, MN	49.88	LOW INCOME	84.62
27	053	1260.00	33460	MINNEAPOLIS CITY, MN	44.63	LOW INCOME	79.43
27	053	1261.01	33460	MINNEAPOLIS CITY, MN	102.78	MIDDLE INCOME	35.18
27	053	1261.02	33460	MINNEAPOLIS CITY, MN	179.56	UPPER INCOME	34.21
27	053	1262.01	33460	MINNEAPOLIS CITY, MN	177.03	UPPER INCOME	33.11
27	053	1262.02	33460	MINNEAPOLIS CITY, MN	126.61	UPPER INCOME	16.59
27	053	1263.00	33460	MINNEAPOLIS CITY, MN	89.68	MIDDLE INCOME	78.57
27	053	9800.00	33460		0	NA	50

27	053	9801.00	33460		0	NA	41.44
27	123	0301.00	33460	ST. PAUL CITY, MN	109.33	MIDDLE INCOME	24.75
27	123	0302.01	33460	ST. PAUL CITY, MN	114.2	MIDDLE INCOME	18.64
27	123	0302.02	33460	ST. PAUL CITY, MN	82.83	MIDDLE INCOME	32.59
27	123	0303.00	33460	ST. PAUL CITY, MN	106.55	MIDDLE INCOME	20.61
27	123	0304.00	33460	ST. PAUL CITY, MN	39.72	LOW INCOME	67.65
27	123	0305.00	33460	ST. PAUL CITY, MN	39.16	LOW INCOME	84.32
27	123	0306.01	33460	ST. PAUL CITY, MN	42.37	LOW INCOME	85.36
27	123	0306.02	33460	ST. PAUL CITY, MN	71.07	MODERATE INCOME	56.25
27	123	0307.02	33460	ST. PAUL CITY, MN	76.89	MODERATE INCOME	61.21
27	123	0307.03	33460	ST. PAUL CITY, MN	73.94	MODERATE INCOME	70.46
27	123	0307.04	33460	ST. PAUL CITY, MN	38.04	LOW INCOME	76.35
27	123	0308.00	33460	ST. PAUL CITY, MN	51.04	MODERATE INCOME	72.64
27	123	0309.00	33460	ST. PAUL CITY, MN	51.75	MODERATE INCOME	75.97
27	123	0310.00	33460	ST. PAUL CITY, MN	51.54	MODERATE INCOME	76.89
27	123	0311.00	33460	ST. PAUL CITY, MN	57.15	MODERATE INCOME	60.41
27	123	0312.00	33460	ST. PAUL CITY, MN	86.65	MIDDLE INCOME	42.43
27	123	0313.00	33460	ST. PAUL CITY, MN	49.23	LOW INCOME	76.98
27	123	0314.00	33460	ST. PAUL CITY, MN	45.32	LOW INCOME	75.18
27	123	0315.00	33460	ST. PAUL CITY, MN	47.12	LOW INCOME	82.43
27	123	0316.00	33460	ST. PAUL CITY, MN	41.59	LOW INCOME	79.93
27	123	0317.01	33460	ST. PAUL CITY, MN	51.1	MODERATE INCOME	77.76
27	123	0317.02	33460	ST. PAUL CITY, MN	37.79	LOW INCOME	83.98
27	123	0318.01	33460	ST. PAUL CITY, MN	49.04	LOW INCOME	73.21
27	123	0318.02	33460	ST. PAUL CITY, MN	57.7	MODERATE INCOME	57.62
27	123	0319.00	33460	ST. PAUL CITY, MN	124.72	UPPER INCOME	49.98
27	123	0320.00	33460	ST. PAUL CITY, MN	96.12	MIDDLE INCOME	34.3
27	123	0321.00	33460	ST. PAUL CITY, MN	92.99	MIDDLE INCOME	41.25
27	123	0322.00	33460	ST. PAUL CITY, MN	93.2	MIDDLE INCOME	31.91
27	123	0323.00	33460	ST. PAUL CITY, MN	70.37	MODERATE INCOME	38.28
27	123	0324.00	33460	ST. PAUL CITY, MN	48	LOW INCOME	70.8
27	123	0325.00	33460	ST. PAUL CITY, MN	46.9	LOW INCOME	76.63
27	123	0326.00	33460	ST. PAUL CITY, MN	59.67	MODERATE INCOME	84.97
27	123	0327.00	33460	ST. PAUL CITY, MN	38.01	LOW INCOME	85.77
27	123	0330.00	33460	ST. PAUL CITY, MN	67.76	MODERATE INCOME	76.67
27	123	0331.00	33460	ST. PAUL CITY, MN	48.78	LOW INCOME	63.27
27	123	0332.00	33460	ST. PAUL CITY, MN	97.37	MIDDLE INCOME	39.19
27	123	0333.00	33460	ST. PAUL CITY, MN	108.03	MIDDLE INCOME	22.91
27	123	0334.00	33460	ST. PAUL CITY, MN	49.83	LOW INCOME	50.04
27	123	0335.00	33460	ST. PAUL CITY, MN	49.32	LOW INCOME	81.54
27	123	0336.00	33460	ST. PAUL CITY, MN	33.47	LOW INCOME	95.63
27	123	0337.00	33460	ST. PAUL CITY, MN	30.25	LOW INCOME	83.09
27	123	0338.00	33460	ST. PAUL CITY, MN	77.79	MODERATE INCOME	52.76
27	123	0339.00	33460	ST. PAUL CITY, MN	68.18	MODERATE INCOME	53.47

27	123	0340.00	33460	ST. PAUL CITY, MN	75.73	MODERATE INCOME	31.29
27	123	0342.01	33460	ST. PAUL CITY, MN	89.2	MIDDLE INCOME	31.25
27	123	0342.03	33460	ST. PAUL CITY, MN	169.54	UPPER INCOME	36.46
27	123	0342.04	33460	ST. PAUL CITY, MN	102.23	MIDDLE INCOME	39.64
27	123	0344.00	33460	ST. PAUL CITY, MN	66.34	MODERATE INCOME	57.01
27	123	0345.00	33460	ST. PAUL CITY, MN	51.4	MODERATE INCOME	69.37
27	123	0346.01	33460	ST. PAUL CITY, MN	62.38	MODERATE INCOME	68.69
27	123	0346.02	33460	ST. PAUL CITY, MN	53.45	MODERATE INCOME	75.22
27	123	0347.01	33460	ST. PAUL CITY, MN	57.48	MODERATE INCOME	71.52
27	123	0347.02	33460	ST. PAUL CITY, MN	54.16	MODERATE INCOME	66.28
27	123	0349.00	33460	ST. PAUL CITY, MN	152.61	UPPER INCOME	13.46
27	123	0350.00	33460	ST. PAUL CITY, MN	124.01	UPPER INCOME	14.33
27	123	0351.00	33460	ST. PAUL CITY, MN	159.61	UPPER INCOME	24.19
27	123	0352.00	33460	ST. PAUL CITY, MN	147.56	UPPER INCOME	16.26
27	123	0353.00	33460	ST. PAUL CITY, MN	131.29	UPPER INCOME	22.68
27	123	0355.00	33460	ST. PAUL CITY, MN	99.86	MIDDLE INCOME	18.32
27	123	0357.00	33460	ST. PAUL CITY, MN	210.38	UPPER INCOME	15.12
27	123	0358.00	33460	ST. PAUL CITY, MN	145.16	UPPER INCOME	15.76
27	123	0359.00	33460	ST. PAUL CITY, MN	101.11	MIDDLE INCOME	37.75
27	123	0360.00	33460	ST. PAUL CITY, MN	145.7	UPPER INCOME	31.61
27	123	0361.00	33460	ST. PAUL CITY, MN	52.42	MODERATE INCOME	83.7
27	123	0363.00	33460	ST. PAUL CITY, MN	148.35	UPPER INCOME	15.27
27	123	0364.00	33460	ST. PAUL CITY, MN	133.78	UPPER INCOME	15.55
27	123	0365.00	33460	ST. PAUL CITY, MN	128.56	UPPER INCOME	16.26
27	123	0366.00	33460	ST. PAUL CITY, MN	131.63	UPPER INCOME	14.43
27	123	0367.00	33460	ST. PAUL CITY, MN	79.34	MODERATE INCOME	24.42
27	123	0368.00	33460	ST. PAUL CITY, MN	68.13	MODERATE INCOME	26.71
27	123	0369.00	33460	ST. PAUL CITY, MN	40.53	LOW INCOME	28.22
27	123	0370.00	33460	ST. PAUL CITY, MN	95.42	MIDDLE INCOME	32.24
27	123	0371.00	33460	ST. PAUL CITY, MN	54.81	MODERATE INCOME	51.49
27	123	0372.00	33460	ST. PAUL CITY, MN	71.16	MODERATE INCOME	62.28
27	123	0374.02	33460	ST. PAUL CITY, MN	68.43	MODERATE INCOME	59.3
27	123	0374.03	33460	ST. PAUL CITY, MN	43.43	LOW INCOME	63.28
27	123	0375.00	33460	ST. PAUL CITY, MN	127.55	UPPER INCOME	24.65
27	123	0376.01	33460	ST. PAUL CITY, MN	88.6	MIDDLE INCOME	23.15
27	123	0376.03	33460	ST. PAUL CITY, MN	29.57	LOW INCOME	69.66
27	123	0376.04	33460	ST. PAUL CITY, MN	51.12	MODERATE INCOME	43.28
27	123	0401.01	33460		110.75	MIDDLE INCOME	13.8
27	123	0401.02	33460	WHITE BEAR LAKE CITY, MN	133.52	UPPER INCOME	10.43
27	123	0402.00	33460	WHITE BEAR LAKE CITY, MN	122.69	UPPER INCOME	7.55
27	123	0403.01	33460	WHITE BEAR LAKE CITY, MN	112.31	MIDDLE INCOME	11.2
27	123	0403.02	33460	WHITE BEAR LAKE CITY, MN	70.44	MODERATE INCOME	18.67
27	123	0404.01	33460	WHITE BEAR LAKE CITY, MN	90.05	MIDDLE INCOME	19.99
27	123	0404.02	33460	MAPLEWOOD CITY, MN	101.45	MIDDLE INCOME	26.27

27	123	0405.02	33460	WHITE BEAR LAKE CITY, MN	83.93	MIDDLE INCOME	14.7
27	123	0405.03	33460	GEM LAKE CITY, MN	85.61	MIDDLE INCOME	16.43
27	123	0405.04	33460	WHITE BEAR LAKE CITY, MN	91.96	MIDDLE INCOME	19.12
27	123	0406.01	33460	NORTH OAKS CITY, MN	210.86	UPPER INCOME	14.64
27	123	0406.03	33460	VADNAIS HEIGHTS CITY, MN	136.05	UPPER INCOME	17.52
27	123	0406.05	33460	LITTLE CANADA CITY, MN	111.15	MIDDLE INCOME	21.66
27	123	0406.06	33460	VADNAIS HEIGHTS CITY, MN	58	MODERATE INCOME	40.73
27	123	0407.04	33460	SHOREVIEW CITY, MN	111.87	MIDDLE INCOME	26.29
27	123	0407.05	33460	BLAINE CITY, MN	120.8	UPPER INCOME	26.34
27	123	0407.06	33460	SHOREVIEW CITY, MN	144.53	UPPER INCOME	21.31
27	123	0407.07	33460	SHOREVIEW CITY, MN	119.95	MIDDLE INCOME	15.26
27	123	0407.08	33460	SHOREVIEW CITY, MN	103.96	MIDDLE INCOME	24.47
27	123	0407.09	33460	SHOREVIEW CITY, MN	141.57	UPPER INCOME	16.28
27	123	0408.01	33460	ARDEN HILLS CITY, MN	99.12	MIDDLE INCOME	31.28
27	123	0408.04	33460	ARDEN HILLS CITY, MN	117.01	MIDDLE INCOME	13.74
27	123	0408.05	33460	ARDEN HILLS CITY, MN	114.26	MIDDLE INCOME	14.17
27	123	0409.01	33460	BLAINE CITY, MN	82.95	MIDDLE INCOME	30.05
27	123	0409.02	33460	MOUNDS VIEW CITY, MN	54.65	MODERATE INCOME	44.7
27	123	0410.01	33460	MOUNDS VIEW CITY, MN	93.21	MIDDLE INCOME	22.45
27	123	0410.02	33460	MOUNDS VIEW CITY, MN	92.68	MIDDLE INCOME	34.64
27	123	0411.03	33460	ST. ANTHONY CITY, MN	75.53	MODERATE INCOME	41.43
27	123	0411.04	33460	NEW BRIGHTON CITY, MN	109.2	MIDDLE INCOME	23.44
27	123	0411.05	33460	NEW BRIGHTON CITY, MN	112.9	MIDDLE INCOME	22.19
27	123	0411.06	33460	NEW BRIGHTON CITY, MN	118.08	MIDDLE INCOME	30.11
27	123	0411.07	33460	NEW BRIGHTON CITY, MN	72.37	MODERATE INCOME	36.7
27	123	0412.00	33460	NEW BRIGHTON CITY, MN	70.01	MODERATE INCOME	42.73
27	123	0413.01	33460	ROSEVILLE CITY, MN	108.73	MIDDLE INCOME	32.99
27	123	0413.02	33460	ROSEVILLE CITY, MN	76.66	MODERATE INCOME	19.52
27	123	0414.00	33460	ROSEVILLE CITY, MN	103.58	MIDDLE INCOME	32.89
27	123	0415.00	33460	ROSEVILLE CITY, MN	87.84	MIDDLE INCOME	19.34
27	123	0416.01	33460	ROSEVILLE CITY, MN	108.25	MIDDLE INCOME	29.98
27	123	0416.02	33460	ROSEVILLE CITY, MN	78.4	MODERATE INCOME	45.93
27	123	0417.00	33460	ROSEVILLE CITY, MN	92.92	MIDDLE INCOME	20.55
27	123	0418.00	33460	ROSEVILLE CITY, MN	87.95	MIDDLE INCOME	29.37
27	123	0419.00	33460	FALCON HEIGHTS CITY, MN	132.35	UPPER INCOME	26.03
27	123	0420.01	33460	FALCON HEIGHTS CITY, MN	75.53	MODERATE INCOME	43.94
27	123	0420.02	33460	LAUDERDALE CITY, MN	72.73	MODERATE INCOME	31.57
27	123	0421.01	33460	LITTLE CANADA CITY, MN	67.2	MODERATE INCOME	45.52
27	123	0421.02	33460	LITTLE CANADA CITY, MN	98.88	MIDDLE INCOME	38.93
27	123	0422.01	33460	MAPLEWOOD CITY, MN	61.63	MODERATE INCOME	53.06
27	123	0422.02	33460	LITTLE CANADA CITY, MN	80.82	MIDDLE INCOME	48.98
27	123	0423.01	33460	MAPLEWOOD CITY, MN	107.33	MIDDLE INCOME	35.01
27	123	0423.02	33460	MAPLEWOOD CITY, MN	88.4	MIDDLE INCOME	46.74
27	123	0424.01	33460	MAPLEWOOD CITY, MN	104.09	MIDDLE INCOME	43.24

27	123	0424.02	33460	MAPLEWOOD CITY, MN	67.15	MODERATE INCOME	47.48
27	123	0425.01	33460	MAPLEWOOD CITY, MN	62.41	MODERATE INCOME	46.3
27	123	0425.03	33460	MAPLEWOOD CITY, MN	131.81	UPPER INCOME	29.03
27	123	0425.04	33460	MAPLEWOOD CITY, MN	105.44	MIDDLE INCOME	44.35
27	123	0426.01	33460	NORTH ST. PAUL CITY, MN	68.61	MODERATE INCOME	42.35
27	123	0426.02	33460	NORTH ST. PAUL CITY, MN	93.3	MIDDLE INCOME	22.77
27	123	0427.00	33460	NORTH ST. PAUL CITY, MN	79.79	MODERATE INCOME	38.3
27	123	0428.00	33460	ST. PAUL CITY, MN	28.55	LOW INCOME	83.33
27	123	0429.00	33460	ST. PAUL CITY, MN	128.63	UPPER INCOME	26
27	123	0430.01	33460	ST. PAUL CITY, MN	143.7	UPPER INCOME	13.58
27	123	0430.02	33460	ST. PAUL CITY, MN	163.89	UPPER INCOME	14.83
27	123	9800.00	33460	ST. PAUL CITY, MN	0	NA	0