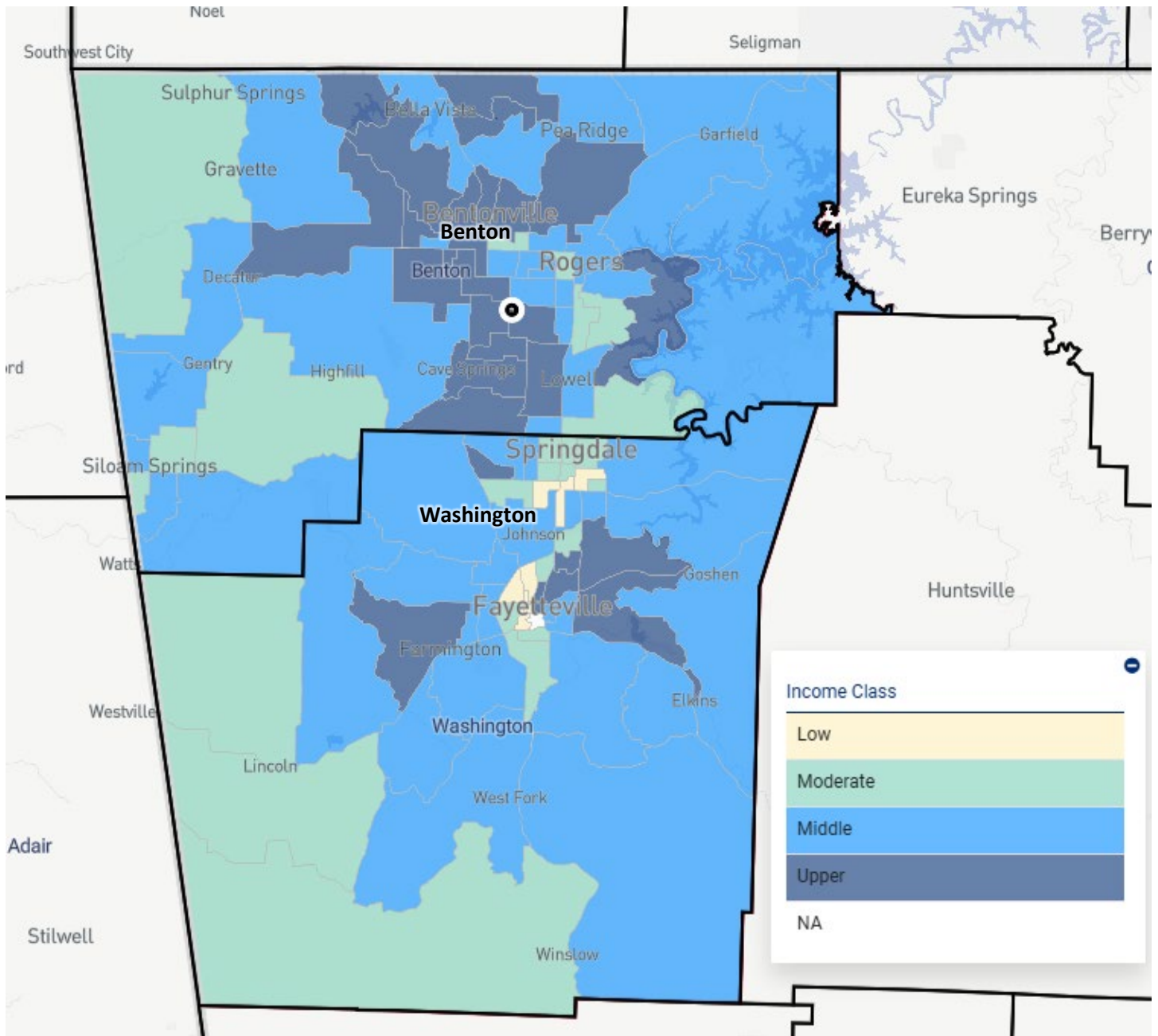


Northwest Arkansas Assessment Area



The Northwest Arkansas Assessment Area consists of Benton and Washington counties, and has 1 banking center listed below and indicated on the map with a black dot.

Banking Center	County	Census Tract Category
Rogers (059)	Benton	Upper

State	County	Census Tract	MSA/MD	Place	% Median Income	Tract Income Category	Minority %
05	007	0201.02	22220	AVOCA TOWN, AR	129.61	UPPER INCOME	21.77
05	007	0201.03	22220	PEA RIDGE CITY, AR	86.89	MIDDLE INCOME	17.09
05	007	0201.04	22220	GARFIELD TOWN, AR	117.31	MIDDLE INCOME	16.14
05	007	0202.01	22220	LITTLE FLOCK CITY, AR	87.01	MIDDLE INCOME	45.95
05	007	0202.03	22220	PRAIRIE CREEK CDP, AR	110.71	MIDDLE INCOME	27.25
05	007	0202.05	22220	ROGERS CITY, AR	72.97	MODERATE INCOME	64.33
05	007	0202.06	22220	LOWELL CITY, AR	61.57	MODERATE INCOME	69.73
05	007	0203.01	22220	ROGERS CITY, AR	65.99	MODERATE INCOME	58.21
05	007	0203.02	22220	ROGERS CITY, AR	87.75	MIDDLE INCOME	56.47
05	007	0203.04	22220	BENTONVILLE CITY, AR	84.5	MIDDLE INCOME	35.78
05	007	0203.05	22220	BENTONVILLE CITY, AR	98.31	MIDDLE INCOME	47.05
05	007	0204.01	22220	BENTONVILLE CITY, AR	82.98	MIDDLE INCOME	36.38
05	007	0204.02	22220	ROGERS CITY, AR	88.01	MIDDLE INCOME	46.55
05	007	0204.04	22220	ROGERS CITY, AR	86.07	MIDDLE INCOME	54.59
05	007	0204.05	22220	LOWELL CITY, AR	169.63	UPPER INCOME	27.27
05	007	0205.01	22220	BENTONVILLE CITY, AR	145.44	UPPER INCOME	26.8
05	007	0205.03	22220	BENTONVILLE CITY, AR	97.6	MIDDLE INCOME	51.62
05	007	0205.04	22220	BENTONVILLE CITY, AR	73.03	MODERATE INCOME	35.08
05	007	0206.04	22220	BENTONVILLE CITY, AR	123.98	UPPER INCOME	29.32
05	007	0206.05	22220	BENTONVILLE CITY, AR	145.85	UPPER INCOME	21.38
05	007	0206.06	22220	BENTONVILLE CITY, AR	190.19	UPPER INCOME	18.33
05	007	0206.07	22220	BENTONVILLE CITY, AR	124.9	UPPER INCOME	48.89
05	007	0206.08	22220	BENTONVILLE CITY, AR	146.87	UPPER INCOME	40.53
05	007	0207.01	22220	BELLA VISTA CITY, AR	120.25	UPPER INCOME	14.68
05	007	0207.03	22220	BELLA VISTA CITY, AR	132.14	UPPER INCOME	13.25
05	007	0207.04	22220	BELLA VISTA CITY, AR	108.34	MIDDLE INCOME	14.41
05	007	0208.01	22220	BELLA VISTA CITY, AR	134.42	UPPER INCOME	9.17
05	007	0208.03	22220	BELLA VISTA CITY, AR	107.12	MIDDLE INCOME	13.17
05	007	0208.05	22220	BELLA VISTA CITY, AR	94.75	MIDDLE INCOME	12.89
05	007	0208.06	22220	BELLA VISTA CITY, AR	165.24	UPPER INCOME	15.93
05	007	0209.03	22220	BENTONVILLE CITY, AR	109.93	MIDDLE INCOME	37.93
05	007	0209.04	22220	BENTONVILLE CITY, AR	129.33	UPPER INCOME	29.21
05	007	0209.05	22220	BELLA VISTA CITY, AR	100.83	MIDDLE INCOME	16.87
05	007	0209.06	22220	CENTERTON CITY, AR	123.89	UPPER INCOME	26.39
05	007	0210.01	22220	CHEROKEE CITY CDP, AR	65.87	MODERATE INCOME	21.25
05	007	0210.03	22220	DECATUR CITY, AR	88.4	MIDDLE INCOME	38.26
05	007	0210.04	22220	GENTRY CITY, AR	84.68	MIDDLE INCOME	27.83
05	007	0211.01	22220	SILOAM SPRINGS CITY, AR	79.56	MODERATE INCOME	46.24
05	007	0211.02	22220	SILOAM SPRINGS CITY, AR	87.22	MIDDLE INCOME	43.25
05	007	0212.01	22220	SILOAM SPRINGS CITY, AR	88.47	MIDDLE INCOME	31.73
05	007	0212.02	22220	SILOAM SPRINGS CITY, AR	75.28	MODERATE INCOME	42.74
05	007	0213.04	22220	BENTONVILLE CITY, AR	144.69	UPPER INCOME	38.6

05	007	0213.05	22220	BENTONVILLE CITY, AR	99.02	MIDDLE INCOME	27.54
05	007	0213.06	22220	BENTONVILLE CITY, AR	289.24	UPPER INCOME	20.24
05	007	0213.08	22220	CAVE SPRINGS CITY, AR	188.13	UPPER INCOME	20.44
05	007	0213.12	22220	GENTRY CITY, AR	78.37	MODERATE INCOME	23.77
05	007	0213.13	22220	SILOAM SPRINGS CITY, AR	99.44	MIDDLE INCOME	31.51
05	007	0213.14	22220	0505740	107.38	MIDDLE INCOME	28.66
05	007	0213.15	22220	0505740	145.32	UPPER INCOME	33.34
05	007	0213.16	22220	CAVE SPRINGS CITY, AR	166.8	UPPER INCOME	21.16
05	007	0213.17	22220	CAVE SPRINGS CITY, AR	137.24	UPPER INCOME	22.39
05	007	0214.04	22220	AVOCA TOWN, AR	94.2	MIDDLE INCOME	26.12
05	007	0214.05	22220	GARFIELD TOWN, AR	104.41	MIDDLE INCOME	15
05	007	0214.06	22220	0505740	98.21	MIDDLE INCOME	54.88
05	007	0214.07	22220	PRAIRIE CREEK CDP, AR	123.4	UPPER INCOME	13.36
05	007	0214.08	22220	0505740	79.05	MODERATE INCOME	50.32
05	007	0214.09	22220		98.76	MIDDLE INCOME	12.08
05	143	0101.01	22220	SPRINGDALE CITY, AR	85.37	MIDDLE INCOME	34.71
05	143	0101.07	22220	FAYETTEVILLE CITY, AR	135.73	UPPER INCOME	17.75
05	143	0101.08	22220	FAYETTEVILLE CITY, AR	195.43	UPPER INCOME	18.93
05	143	0101.09	22220	GOSHEN TOWN, AR	98.69	MIDDLE INCOME	21.9
05	143	0101.10	22220	FAYETTEVILLE CITY, AR	109.88	MIDDLE INCOME	23.51
05	143	0101.11	22220	FAYETTEVILLE CITY, AR	93.19	MIDDLE INCOME	10.2
05	143	0101.12	22220	ELKINS CITY, AR	81.85	MIDDLE INCOME	14.05
05	143	0101.13	22220	ELKINS CITY, AR	141.13	UPPER INCOME	19.02
05	143	0101.14	22220	FAYETTEVILLE CITY, AR	52.05	MODERATE INCOME	29.56
05	143	0101.15	22220	FAYETTEVILLE CITY, AR	136.05	UPPER INCOME	15.83
05	143	0102.01	22220	SPRINGDALE CITY, AR	53.33	MODERATE INCOME	76.1
05	143	0102.02	22220	SPRINGDALE CITY, AR	60.97	MODERATE INCOME	83.57
05	143	0103.03	22220	FAYETTEVILLE CITY, AR	85.18	MIDDLE INCOME	62.35
05	143	0103.04	22220	SPRINGDALE CITY, AR	46.61	LOW INCOME	66.07
05	143	0103.05	22220	FAYETTEVILLE CITY, AR	86.79	MIDDLE INCOME	68.02
05	143	0103.06	22220	SPRINGDALE CITY, AR	75.38	MODERATE INCOME	81.03
05	143	0103.07	22220	SPRINGDALE CITY, AR	49.61	LOW INCOME	85.67
05	143	0104.01	22220	SPRINGDALE CITY, AR	78.38	MODERATE INCOME	61.94
05	143	0104.02	22220	SPRINGDALE CITY, AR	74.41	MODERATE INCOME	57.67
05	143	0104.04	22220	SPRINGDALE CITY, AR	45.97	LOW INCOME	80.13
05	143	0104.05	22220	FAYETTEVILLE CITY, AR	95.7	MIDDLE INCOME	39.3
05	143	0105.01	22220	ELM SPRINGS CITY, AR	117.81	MIDDLE INCOME	19.74
05	143	0105.08	22220	FAYETTEVILLE CITY, AR	107.24	MIDDLE INCOME	26.65
05	143	0105.10	22220	SPRINGDALE CITY, AR	86.66	MIDDLE INCOME	50.17
05	143	0105.11	22220	FAYETTEVILLE CITY, AR	119.71	MIDDLE INCOME	23.57
05	143	0105.12	22220	SPRINGDALE CITY, AR	75.98	MODERATE INCOME	35.72
05	143	0105.13	22220	CINCINNATI CDP, AR	64.06	MODERATE INCOME	29.05
05	143	0105.14	22220	LINCOLN CITY, AR	88.97	MIDDLE INCOME	19.56
05	143	0105.15	22220	FARMINGTON CITY, AR	139.48	UPPER INCOME	18.41

05	143	0105.16	22220	FAYETTEVILLE CITY, AR	93.4	MIDDLE INCOME	30.73
05	143	0105.17	22220	FAYETTEVILLE CITY, AR	114.69	MIDDLE INCOME	22.25
05	143	0105.18	22220	ELM SPRINGS CITY, AR	159.26	UPPER INCOME	25.98
05	143	0105.19	22220	ELM SPRINGS CITY, AR	99.69	MIDDLE INCOME	40.99
05	143	0105.20	22220	FARMINGTON CITY, AR	85.36	MIDDLE INCOME	28.45
05	143	0105.21	22220	FAYETTEVILLE CITY, AR	86.55	MIDDLE INCOME	33.49
05	143	0106.01	22220	FAYETTEVILLE CITY, AR	67.93	MODERATE INCOME	26.14
05	143	0106.02	22220	FAYETTEVILLE CITY, AR	47.5	LOW INCOME	35.19
05	143	0107.03	22220	FAYETTEVILLE CITY, AR	32.93	LOW INCOME	39.59
05	143	0107.04	22220	FAYETTEVILLE CITY, AR	21.52	LOW INCOME	33
05	143	0107.05	22220	FAYETTEVILLE CITY, AR	58.83	MODERATE INCOME	32.64
05	143	0107.06	22220	FAYETTEVILLE CITY, AR	127.9	UPPER INCOME	14.8
05	143	0110.02	22220	CANEHILL CDP, AR	66.5	MODERATE INCOME	18.22
05	143	0110.03	22220	GREENLAND CITY, AR	100.39	MIDDLE INCOME	15.54
05	143	0110.04	22220	EVANSVILLE CDP, AR	67.54	MODERATE INCOME	13.99
05	143	0110.05	22220	FARMINGTON CITY, AR	99.34	MIDDLE INCOME	17.01
05	143	0110.06	22220	FARMINGTON CITY, AR	98.05	MIDDLE INCOME	21.14
05	143	0111.03	22220	WEST FORK CITY, AR	89.41	MIDDLE INCOME	14.43
05	143	0111.04	22220	FAYETTEVILLE CITY, AR	56.7	MODERATE INCOME	29.98
05	143	0111.05	22220	FAYETTEVILLE CITY, AR	64.05	MODERATE INCOME	27.19
05	143	0111.06	22220	ELKINS CITY, AR	110.5	MIDDLE INCOME	19.79
05	143	0111.07	22220	FAYETTEVILLE CITY, AR	107.7	MIDDLE INCOME	24.27
05	143	0112.00	22220	SPRINGDALE CITY, AR	76.08	MODERATE INCOME	64.39
05	143	0113.01	22220	FAYETTEVILLE CITY, AR	27.71	LOW INCOME	24.25
05	143	0113.02	22220	FAYETTEVILLE CITY, AR	0	NA	18.51