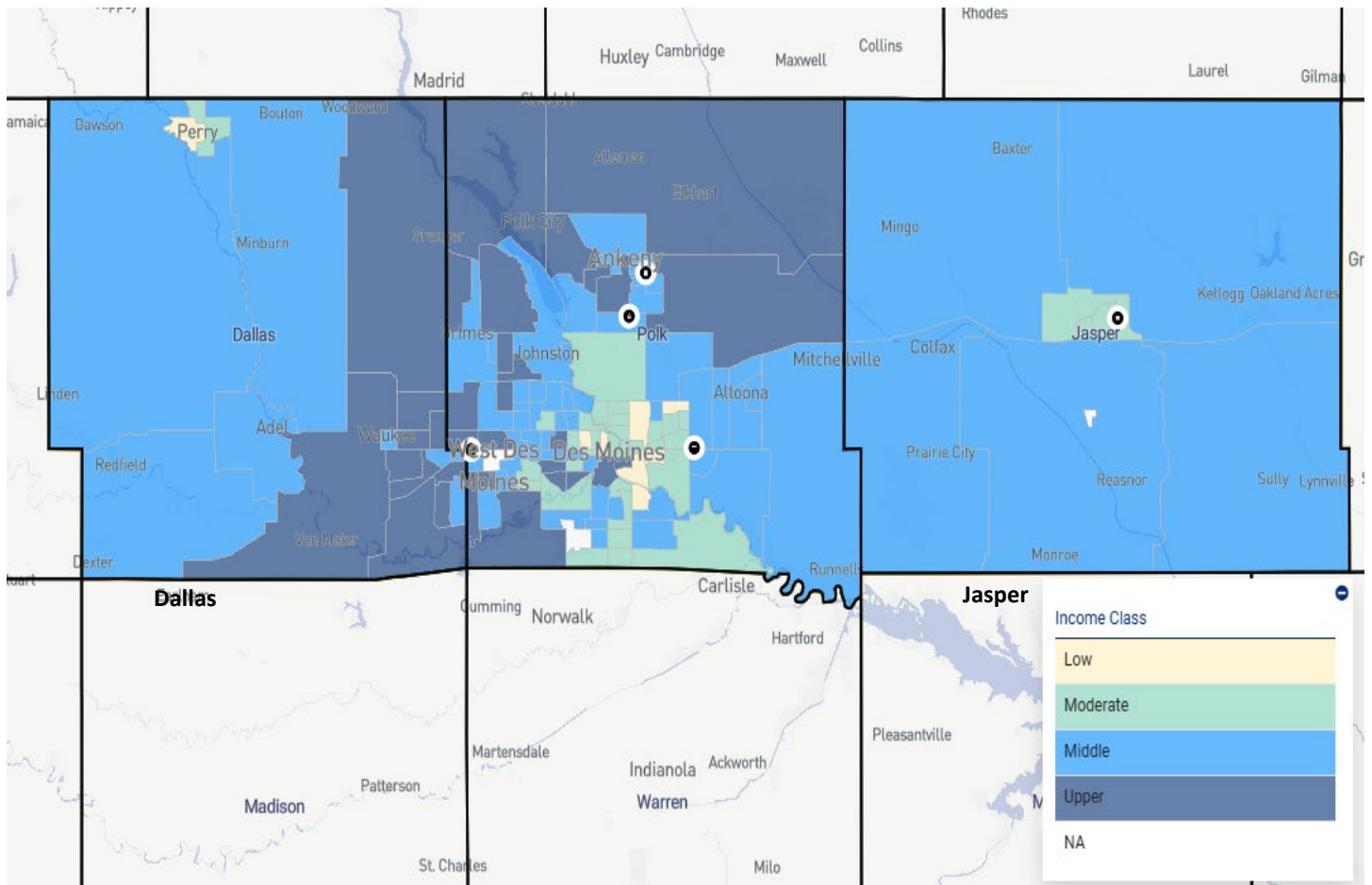


Des Moines Assessment Area



The Des Moines Iowa Assessment Area consists of Dallas, Polk, and Jasper counties and 5 banking centers listed below and indicated on the map with a black dot.

Banking Center	County	Census Tract Category
Newton (087)	Jasper	Moderate
Ankeny (093)	Polk	Middle
Ankeny North (535)	Polk	Middle
Clive (536)	Polk	Upper
Pleasant Hill (539)	Polk	Middle

State	County	Census Tract	MSA/MD	Place	% Median Income	Tract Income Category	Minority %
19	049	0501.00	19780	GRANGER CITY, IA	152.21	UPPER INCOME	9.34
19	049	0502.00	19780	ADEL CITY, IA	89.26	MIDDLE INCOME	6.17
19	049	0503.00	19780	PERRY CITY, IA	67.94	MODERATE INCOME	38.57
19	049	0504.00	19780	PERRY CITY, IA	49.94	LOW INCOME	52.04
19	049	0505.00	19780	DAWSON CITY, IA	81.07	MIDDLE INCOME	7.31
19	049	0506.00	19780	DEXTER CITY, IA	108.56	MIDDLE INCOME	6.77
19	049	0507.00	19780	ADEL CITY, IA	110.91	MIDDLE INCOME	6.84
19	049	0508.03	19780	CLIVE CITY, IA	156.09	UPPER INCOME	15.14
19	049	0508.05	19780	CLIVE CITY, IA	179.79	UPPER INCOME	13.7
19	049	0508.07	19780	CLIVE CITY, IA	124.8	UPPER INCOME	21.73
19	049	0508.12	19780	WAUKEE CITY, IA	156.53	UPPER INCOME	14.27
19	049	0508.13	19780	WEST DES MOINES CITY, IA	117.13	MIDDLE INCOME	28.04
19	049	0508.14	19780	WEST DES MOINES CITY, IA	154.62	UPPER INCOME	24.9
19	049	0508.15	19780	WEST DES MOINES CITY, IA	140.88	UPPER INCOME	25.63
19	049	0508.16	19780	WEST DES MOINES CITY, IA	108.78	MIDDLE INCOME	25.86
19	049	0508.17	19780	WAUKEE CITY, IA	148.32	UPPER INCOME	17.88
19	049	0508.18	19780	WAUKEE CITY, IA	136.55	UPPER INCOME	25.85
19	049	0509.01	19780	WAUKEE CITY, IA	100.86	MIDDLE INCOME	12.02
19	049	0509.02	19780	ADEL CITY, IA	144.25	UPPER INCOME	8.32
19	099	0401.00	19780	KELLOGG CITY, IA	88.07	MIDDLE INCOME	7.45
19	099	0402.00	19780	BAXTER CITY, IA	106.46	MIDDLE INCOME	5.06
19	099	0403.00	19780	LAMBS GROVE CITY, IA	65.24	MODERATE INCOME	10.58
19	099	0404.00	19780	NEWTON CITY, IA	61.58	MODERATE INCOME	11.16
19	099	0405.00	19780	NEWTON CITY, IA	54.35	MODERATE INCOME	12.1
19	099	0406.00	19780	NEWTON CITY, IA	69.8	MODERATE INCOME	11.31
19	099	0407.00	19780	COLFAX CITY, IA	84.93	MIDDLE INCOME	6.94
19	099	0408.00	19780	MONROE CITY, IA	93.53	MIDDLE INCOME	5.14
19	099	0409.00	19780	LYNNVILLE CITY, IA	93.06	MIDDLE INCOME	4.42
19	099	9800.00	19780		0	NA	23.88
19	153	0001.01	19780	DES MOINES CITY, IA	45.04	LOW INCOME	40.04
19	153	0001.02	19780	DES MOINES CITY, IA	66.97	MODERATE INCOME	26.32
19	153	0001.03	19780	DES MOINES CITY, IA	75.45	MODERATE INCOME	27.79
19	153	0002.01	19780	DES MOINES CITY, IA	81.15	MIDDLE INCOME	33.33
19	153	0002.02	19780	DES MOINES CITY, IA	73.77	MODERATE INCOME	32.3
19	153	0003.00	19780	DES MOINES CITY, IA	49.6	LOW INCOME	39.21
19	153	0004.00	19780	DES MOINES CITY, IA	62.19	MODERATE INCOME	43.73
19	153	0005.00	19780	DES MOINES CITY, IA	60.01	MODERATE INCOME	47.96
19	153	0006.00	19780	DES MOINES CITY, IA	73.19	MODERATE INCOME	40.07
19	153	0007.01	19780	DES MOINES CITY, IA	77.38	MODERATE INCOME	65.51

19	153	0007.02	19780	DES MOINES CITY, IA	81.94	MIDDLE INCOME	38.92
19	153	0007.03	19780	DES MOINES CITY, IA	91.9	MIDDLE INCOME	19.24
19	153	0007.04	19780	DES MOINES CITY, IA	84.36	MIDDLE INCOME	33.97
19	153	0008.01	19780	DES MOINES CITY, IA	81.61	MIDDLE INCOME	36.58
19	153	0008.02	19780	DES MOINES CITY, IA	115.42	MIDDLE INCOME	13.76
19	153	0008.03	19780	DES MOINES CITY, IA	61.38	MODERATE INCOME	29.31
19	153	0009.01	19780	DES MOINES CITY, IA	82.05	MIDDLE INCOME	24.32
19	153	0009.02	19780	DES MOINES CITY, IA	121.1	UPPER INCOME	14.8
19	153	0010.00	19780	DES MOINES CITY, IA	77.46	MODERATE INCOME	27.9
19	153	0011.00	19780	DES MOINES CITY, IA	31.16	LOW INCOME	51.96
19	153	0012.00	19780	DES MOINES CITY, IA	59.1	MODERATE INCOME	77.48
19	153	0015.00	19780	DES MOINES CITY, IA	74.63	MODERATE INCOME	44.08
19	153	0017.00	19780	DES MOINES CITY, IA	53.98	MODERATE INCOME	81.37
19	153	0018.00	19780	DES MOINES CITY, IA	67.33	MODERATE INCOME	36.62
19	153	0019.00	19780	DES MOINES CITY, IA	72.94	MODERATE INCOME	31.87
19	153	0021.00	19780	DES MOINES CITY, IA	47.53	LOW INCOME	41.56
19	153	0026.00	19780	DES MOINES CITY, IA	57.13	MODERATE INCOME	60.46
19	153	0027.00	19780	DES MOINES CITY, IA	90.94	MIDDLE INCOME	44.67
19	153	0028.00	19780	DES MOINES CITY, IA	91.32	MIDDLE INCOME	25.89
19	153	0029.00	19780	DES MOINES CITY, IA	52.78	MODERATE INCOME	20.77
19	153	0030.01	19780	DES MOINES CITY, IA	107.2	MIDDLE INCOME	13.35
19	153	0030.02	19780	DES MOINES CITY, IA	194.51	UPPER INCOME	9.81
19	153	0031.00	19780	DES MOINES CITY, IA	207.77	UPPER INCOME	11.5
19	153	0032.00	19780	DES MOINES CITY, IA	168.2	UPPER INCOME	12.2
19	153	0039.01	19780	DES MOINES CITY, IA	45.66	LOW INCOME	64.46
19	153	0039.02	19780	DES MOINES CITY, IA	86.46	MIDDLE INCOME	56.87
19	153	0040.01	19780	DES MOINES CITY, IA	75.94	MODERATE INCOME	45.39
19	153	0040.04	19780	DES MOINES CITY, IA	109.23	MIDDLE INCOME	17.01
19	153	0041.00	19780	DES MOINES CITY, IA	90.22	MIDDLE INCOME	20.7
19	153	0042.00	19780	DES MOINES CITY, IA	71.19	MODERATE INCOME	38.86
19	153	0043.00	19780	DES MOINES CITY, IA	82.54	MIDDLE INCOME	31.38
19	153	0044.00	19780	DES MOINES CITY, IA	53.49	MODERATE INCOME	50.53
19	153	0045.01	19780	DES MOINES CITY, IA	68.68	MODERATE INCOME	43.3
19	153	0045.02	19780	DES MOINES CITY, IA	85.24	MIDDLE INCOME	25.57
19	153	0046.02	19780	DES MOINES CITY, IA	67.34	MODERATE INCOME	45.68
19	153	0046.03	19780	DES MOINES CITY, IA	85.27	MIDDLE INCOME	28.03
19	153	0047.01	19780	DES MOINES CITY, IA	67.07	MODERATE INCOME	36.12
19	153	0047.02	19780	DES MOINES CITY, IA	51.09	MODERATE INCOME	43.44
19	153	0048.00	19780	DES MOINES CITY, IA	53.48	MODERATE INCOME	71.23
19	153	0049.00	19780	DES MOINES CITY, IA	52.41	MODERATE INCOME	70.24
19	153	0050.00	19780	DES MOINES CITY, IA	26.82	LOW INCOME	76.73
19	153	0051.01	19780	DES MOINES CITY, IA	126.54	UPPER INCOME	26.22
19	153	0051.02	19780	DES MOINES CITY, IA	136.99	UPPER INCOME	33.96
19	153	0052.00	19780	DES MOINES CITY, IA	44.23	LOW INCOME	60.24

19	153	0053.00	19780	DES MOINES CITY, IA	74.68	MODERATE INCOME	44.44
19	153	0101.01	19780	ALLEMAN CITY, IA	138.04	UPPER INCOME	8.91
19	153	0101.02	19780	ALTOONA CITY, IA	123.19	UPPER INCOME	10.52
19	153	0102.05	19780	ANKENY CITY, IA	128.37	UPPER INCOME	13.19
19	153	0102.07	19780	ANKENY CITY, IA	122.65	UPPER INCOME	12.36
19	153	0102.08	19780	ANKENY CITY, IA	93.18	MIDDLE INCOME	12.74
19	153	0102.09	19780	ANKENY CITY, IA	109.52	MIDDLE INCOME	15.21
19	153	0102.11	19780	ANKENY CITY, IA	114.18	MIDDLE INCOME	13.69
19	153	0102.12	19780	ANKENY CITY, IA	106.88	MIDDLE INCOME	14.73
19	153	0102.13	19780	ANKENY CITY, IA	119.74	MIDDLE INCOME	8.52
19	153	0102.14	19780	ANKENY CITY, IA	113.98	MIDDLE INCOME	15.73
19	153	0102.15	19780	ANKENY CITY, IA	168.34	UPPER INCOME	9.52
19	153	0102.16	19780	ANKENY CITY, IA	110.08	MIDDLE INCOME	13.1
19	153	0104.04	19780	URBAN DALE CITY, IA	114.44	MIDDLE INCOME	19.82
19	153	0104.06	19780	URBAN DALE CITY, IA	90.97	MIDDLE INCOME	20.08
19	153	0104.07	19780	URBAN DALE CITY, IA	154.38	UPPER INCOME	14.4
19	153	0104.08	19780	URBAN DALE CITY, IA	103.07	MIDDLE INCOME	26.73
19	153	0104.09	19780	URBAN DALE CITY, IA	106.39	MIDDLE INCOME	21.07
19	153	0104.10	19780	URBAN DALE CITY, IA	85.26	MIDDLE INCOME	20.24
19	153	0104.11	19780	URBAN DALE CITY, IA	88.5	MIDDLE INCOME	26.79
19	153	0105.00	19780	ANKENY CITY, IA	73.49	MODERATE INCOME	18.33
19	153	0106.01	19780	ALTOONA CITY, IA	87.32	MIDDLE INCOME	13.84
19	153	0106.02	19780	ALTOONA CITY, IA	103.91	MIDDLE INCOME	21.34
19	153	0107.02	19780	ALTOONA CITY, IA	112.39	MIDDLE INCOME	9.82
19	153	0107.03	19780	ALTOONA CITY, IA	91.82	MIDDLE INCOME	17.65
19	153	0107.07	19780	ALTOONA CITY, IA	86.86	MIDDLE INCOME	17.88
19	153	0107.08	19780	ALTOONA CITY, IA	117.6	MIDDLE INCOME	13.22
19	153	0107.09	19780	ALTOONA CITY, IA	95.58	MIDDLE INCOME	11.19
19	153	0108.03	19780	PLEASANT HILL CITY, IA	82.36	MIDDLE INCOME	19.38
19	153	0108.04	19780	PLEASANT HILL CITY, IA	118.95	MIDDLE INCOME	13.12
19	153	0108.05	19780	DES MOINES CITY, IA	108.21	MIDDLE INCOME	41.24
19	153	0108.06	19780	CARLISLE CITY, IA	72.52	MODERATE INCOME	42.93
19	153	0110.01	19780	WEST DES MOINES CITY, IA	69.86	MODERATE INCOME	31.36
19	153	0110.21	19780	WEST DES MOINES CITY, IA	113.32	MIDDLE INCOME	15.77
19	153	0110.25	19780	WEST DES MOINES CITY, IA	131.56	UPPER INCOME	16.78
19	153	0110.26	19780	WEST DES MOINES CITY, IA	165.09	UPPER INCOME	14.9
19	153	0110.27	19780	WEST DES MOINES CITY, IA	114.9	MIDDLE INCOME	22.07
19	153	0110.28	19780	DES MOINES CITY, IA	135.92	UPPER INCOME	20.73
19	153	0111.11	19780	WEST DES MOINES CITY, IA	62.87	MODERATE INCOME	30.03
19	153	0111.12	19780	WEST DES MOINES CITY, IA	114.47	MIDDLE INCOME	21.32

19	153	0111.13	19780	WEST DES MOINES CITY, IA	117.4	MIDDLE INCOME	32.96
19	153	0111.14	19780	WEST DES MOINES CITY, IA	0	NA	31.27
19	153	0112.01	19780	CLIVE CITY, IA	104.8	MIDDLE INCOME	22.28
19	153	0112.03	19780	CLIVE CITY, IA	168.36	UPPER INCOME	14.44
19	153	0112.05	19780	CLIVE CITY, IA	92.24	MIDDLE INCOME	56.01
19	153	0112.06	19780	CLIVE CITY, IA	126.34	UPPER INCOME	14.82
19	153	0113.01	19780	GRIMES CITY, IA	142.32	UPPER INCOME	9.58
19	153	0113.02	19780	GRIMES CITY, IA	113.09	MIDDLE INCOME	11.76
19	153	0113.03	19780	GRIMES CITY, IA	92.73	MIDDLE INCOME	15.7
19	153	0113.04	19780	GRIMES CITY, IA	181.48	UPPER INCOME	13.31
19	153	0113.05	19780	JOHNSTON CITY, IA	93.92	MIDDLE INCOME	32.88
19	153	0114.05	19780	GRIMES CITY, IA	214.12	UPPER INCOME	14.34
19	153	0114.06	19780	JOHNSTON CITY, IA	88.78	MIDDLE INCOME	19.94
19	153	0115.00	19780	GRANGER CITY, IA	147.13	UPPER INCOME	6.19
19	153	0116.00	19780	DES MOINES CITY, IA	0	NA	0
19	153	0117.02	19780	JOHNSTON CITY, IA	106.35	MIDDLE INCOME	17.67
19	153	0117.03	19780	JOHNSTON CITY, IA	164.98	UPPER INCOME	16.74
19	153	0117.04	19780	JOHNSTON CITY, IA	162.1	UPPER INCOME	12.61